

## GZMM Polyclonal Antibody

Catalog number: 13208-1-AP

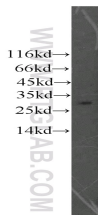
Size: 66 µg/150 µl

Source: Rabbit

Isotype: IgG

Synonyms:

GZMM; Granzyme M, GZMM,  
Hu Met 1, LMET1, Met 1 serine  
protease, Met ase, MET1



mouse lymph tissue were subjected to SDS PAGE followed by western blot with 13208-1-AP(GZMM antibody) at dilution of 1:500

### Applications

Tested applications:	ELISA, WB
Species specificity:	Human,Mouse,Rat; other species not tested.
Calculated GZMM MW:	257aa,27 kDa
Observed GZMM MW:	30 kDa
Positive WB detected in	Mouse lymph tissue
Recommended dilution:	WB: 1:200-1:2000

Application key: WB = Western blotting, IHC = Immunohistochemistry, IF = Immunofluorescence, IP = Immunoprecipitation

### Immunogen information

Immunogen:	Ag3982
GenBank accession number:	BC025701
Gene ID (NCBI):	3004
Full name:	Granzyme M (lymphocyte met-ase 1)

### Product information

Purification method:	Antigen affinity purification
Storage:	PBS with 0.02% sodium azide and 50% glycerol pH 7.3. Store at -20°C.