

## HUS1 Polyclonal Antibody

Catalog number: 11223-1-AP

Size: 45 µg/150 µl

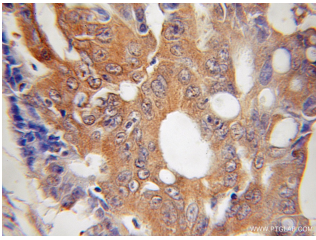
Source: Rabbit

Isotype: IgG

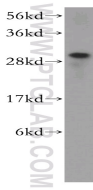
Synonyms:

HUS1; Checkpoint protein

HUS1, hHUS1, HUS1



Immunohistochemical of paraffin-embedded human colon cancer using 11223-1-AP(HUS1 antibody) at dilution of 1:50 (under 10x lens)



BxPC-3 cells were subjected to SDS PAGE followed by western blot with 11223-1-AP(HUS1 antibody) at dilution of 1:0

### Background

Hus1 belongs to the Rad family, form a heterotrimeric clamp with Rad1and Rad9 that acts as a putative sensor for DNA damage. This complex plays an apical role in the DNA damage response, loss of a functional complex affects many downstream checkpoint pathways [PMID: 11340080]. It is also a key complex involved in the activation of the ATR pathway. 9-1-1 forms a ring-shaped heterotrimer, resembling the homotrimeric sliding clamp, proliferating cell nuclear antigen (PCNA) [PMID: 19535328].

### Applications

Tested applications:	ELISA, IHC, WB
Species specificity:	Human; other species not tested.
Calculated HUS1 MW:	32 kDa
Observed HUS1 MW:	32 kDa
Positive WB detected in	BxPC-3 cells
Positive IHC detected in	Human colon cancer tissue
Recommended dilution:	WB: N/A IHC: 1:20-1:200

Application key: WB = Western blotting, IHC = Immunohistochemistry, IF = Immunofluorescence, IP = Immunoprecipitation

### Immunogen information

Immunogen:	Ag1744
GenBank accession number:	BC007013
Gene ID (NCBI):	3364
Full name:	HUS1 checkpoint homolog (S. pombe)

### Product information

Purification method:	Antigen affinity purification
Storage:	PBS with 0.1% sodium azide and 50% glycerol pH 7.3. Store at -20°C.