

UBE2L3 Polyclonal Antibody

Catalog number: 14415-1-AP

Size: 40 µg/150 µl

Source: Rabbit

Isotype: IgG

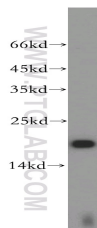
Synonyms:

UBE2L3; E2 F1, L UBC, UBCE7,

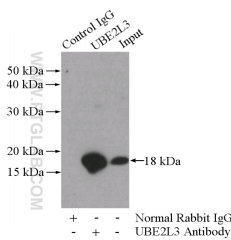
UBCH7, UbcM4, UBE2L3,

Ubiquitin carrier protein L3,

Ubiquitin protein ligase L3



HeLa cells were subjected to SDS PAGE followed by western blot with 14415-1-AP(UBE2L3 antibody) at dilution of 1:500



IP Result of anti-UBE2L3 (IP:14415-1-AP, 3µg; Detection:14415-1-AP 1:2000) with mouse kidney tissue lysate 4000µg.

Background

UBE2L3(Ubiquitin-conjugating enzyme E2 L3) is also named as UBCE7, UBCH7 and belongs to the ubiquitin-conjugating enzyme family. It regulates nuclear hormone receptors transcriptional activity and may play a role in myelopoiesis.UBE2L3 is associated with susceptibility to systemic lupus erythematosus (SLE) and rheumatoid arthritis in European ancestry populations(PMID:22045845).

Applications

Tested applications:	ELISA, WB, IP
Cited applications:	WB
Species specificity:	Human,Mouse,Rat; other species not tested.
Cited species:	Human
Calculated UBE2L3 MW:	18 kDa
Observed UBE2L3 MW:	18 kDa
Positive WB detected in	HeLa cells, A431 cells, HEK-293 cells, K-562 cells, MCF7 cells, mouse kidney tissue, mouse testis tissue, NIH/3T3 cells, rat kidney tissue
Positive IP detected in	Mouse kidney tissue
Recommended dilution:	WB: 1:1000-1:10000 IP: 1:1000-1:10000

Application key: WB = Western blotting, IHC = Immunohistochemistry, IF = Immunofluorescence, IP = Immunoprecipitation

Immunogen information

Immunogen:	Ag5758
GenBank accession number:	BC053368
Gene ID (NCBI):	7332
Full name:	Ubiquitin-conjugating enzyme E2L 3

Product information

Purification method:	Antigen affinity purification
Storage:	PBS with 0.02% sodium azide and 50% glycerol pH 7.3. Store at -20°C.