

ARL2 Polyclonal Antibody

Catalog number: 10232-1-AP

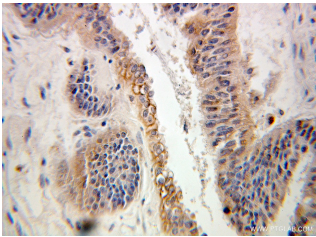
Size: 30 µg/150 µl

Source: Rabbit

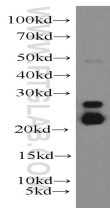
Isotype: IgG

Synonyms:

ARL2; ADP ribosylation factor like 2, ARFL2, ARL2



Immunohistochemical of paraffin-embedded human ovary tumor using 10232-1-AP (ARL2 antibody) at dilution of 1:100 (under 25x lens)



mouse liver tissue were subjected to SDS PAGE followed by western blot with 10232-1-AP (ARL2 antibody) at dilution of 1:500

Background

The ADP-ribosylation factor (ARF) genes are small GTP-binding proteins of the RAS superfamily. ADP-ribosylation factor-like 2 (ARL2) is a member of a functionally distinct group of ARF-like genes. ARL2 interacts with the tubulin-specific chaperone protein known as cofactor D. ARL2 downregulates the tubulin GAP activity of cofactor C, D, and E, and inhibits the binding of D to native tubulin.

Applications

| | |
|--------------------------|---|
| Tested applications: | ELISA, WB, IHC |
| Cited applications: | IF, WB |
| Species specificity: | Human, Mouse, Rat; other species not tested. |
| Cited species: | Human, rat |
| Calculated ARL2 MW: | 21 kDa |
| Observed ARL2 MW: | 21-25 kDa |
| Positive WB detected in | Mouse liver tissue, HeLa cells, mouse lung tissue, mouse spleen tissue, Y79 cells |
| Positive IHC detected in | Human ovary tumor tissue |
| Recommended dilution: | WB: 1:500-1:5000 IHC: 1:20-1:200 |

Application key: WB = Western blotting, IHC = Immunohistochemistry, IF = Immunofluorescence, IP = Immunoprecipitation

Immunogen information

| | |
|---------------------------|--------------------------------|
| Immunogen: | Ag0334 |
| GenBank accession number: | BC002530 |
| Gene ID (NCBI): | 402 |
| Full name: | ADP-ribosylation factor-like 2 |

Product information

| | |
|----------------------|---|
| Purification method: | Antigen affinity purification |
| Storage: | PBS with 0.1% sodium azide and 50% glycerol pH 7.3. Store at -20°C. |