

RYPB Polyclonal Antibody

Catalog number: 11365-1-AP

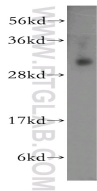
Size: 45 µg/150 µl

Source: Rabbit

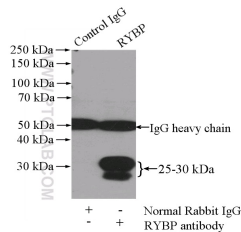
Isotype: IgG

Synonyms:

RYPB; AAP1, APAP 1, Apoptin associating protein 1, DED associated factor, DEDAF, RING1 and YY1 binding protein, RYPB, YEAF1



K-562 cells were subjected to SDS PAGE followed by western blot with 11365-1-AP(RYPB antibody) at dilution of 1:500



IP Result of anti-RYPB (IP:11365-1-AP, 4µg; Detection:11365-1-AP 1:300) with mouse spleen tissue lysate 4000µg.

Background

Polycomb repressive complexes (PRCs) are important chromatin regulators of embryonic stem (ES) cell function [PMID:22269950]. RYPB binds Polycomb H2A monoubiquitin ligases Ring1A and Ring1B and has been suggested to assist PRC localization to their targets. RYPB, firstly identified as a direct interactor with Ring1A, acts as transcriptional repressor in reporter assays, both in tissue culture cells and in the fly [PMID:16125914]

Applications

Tested applications:	ELISA, WB, IP
Species specificity:	Human, Mouse, Rat; other species not tested.
Calculated RYPB MW:	228aa, 25 kDa
Observed RYPB MW:	32 kDa
Positive WB detected in	K-562 cells
Positive IP detected in	Mouse spleen tissue
Recommended dilution:	WB: 1:200-1:2000 IP: 1:200-1:1000

Application key: WB = Western blotting, IHC = Immunohistochemistry, IF = Immunofluorescence, IP = Immunoprecipitation

Immunogen information

Immunogen:	Ag1908
GenBank accession number:	BC014959
Gene ID (NCBI):	23429
Full name:	RING1 and YY1 binding protein

Product information

Purification method:	Antigen affinity purification
Storage:	PBS with 0.1% sodium azide and 50% glycerol pH 7.3. Store at -20°C.