

BBS2 Polyclonal Antibody

Catalog number: 11188-2-AP

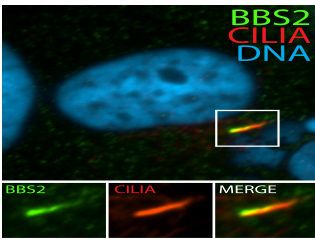
Size: 20 µg/150 µl

Source: Rabbit

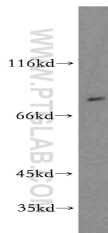
Isotype: IgG

Synonyms:

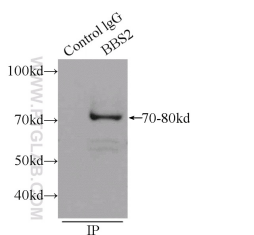
BBS2; Bardet Biedl syndrome 2, BBS, BBS2



IF result (cilia stain) of anti-BBS2 (11188-2-AP, 1:50) with serum-starved hTERT-RPE1 cells by Dr. Moshe Kim.



mouse testis tissue were subjected to SDS PAGE followed by western blot with 11188-2-AP(BBS2 antibody) at dilution of 1:500



IP Result of anti-BBS2 (IP:11188-2-AP, 5µg; Detection:11188-2-AP 1:500) with mouse liver tissue lysate 6000µg.

Background

BBS2 is one of seven BBS proteins that form the stable core of a protein complex (BBSome complex, 438kd) which is required for ciliogenesis but is dispensable for centriolar satellite function.

Applications

Tested applications:	ELISA, WB, IF, IP
Cited applications:	IF, IHC, WB
Species specificity:	Human, Mouse, Rat; other species not tested.
Cited species:	Human, mouse, rat
Calculated BBS2 MW:	80 kDa
Observed BBS2 MW:	80kd
Positive WB detected in	Mouse testis tissue
Positive IP detected in	Mouse liver tissue
Positive IF detected in	HTERT-RPE1 cells
Recommended dilution:	WB: 1:200-1:2000 IP: 1:200-1:2000 IF: 1:20-1:200

Application key: WB = Western blotting, IHC = Immunohistochemistry, IF = Immunofluorescence, IP = Immunoprecipitation

Immunogen information

Immunogen:	Ag1662
GenBank accession number:	BC014140
Gene ID (NCBI):	583
Full name:	Bardet-Biedl syndrome 2

Product information

Purification method:	Antigen affinity purification
Storage:	PBS with 0.1% sodium azide and 50% glycerol pH 7.3. Store at -20°C.