

KCNF1 Polyclonal Antibody

Catalog number: 13191-1-AP

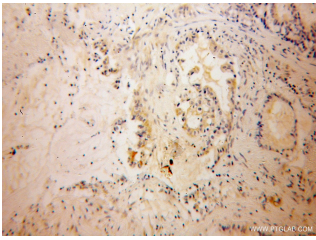
Size: 28 µg/150 µl

Source: Rabbit

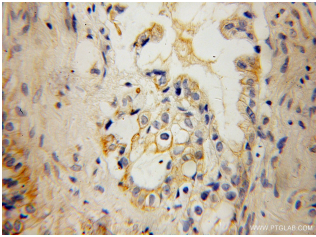
Isotype: IgG

Synonyms:

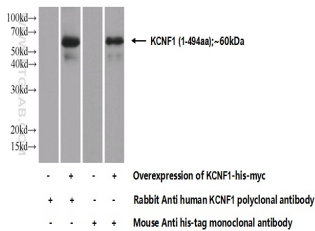
KCNF1; IK8, KCNF, KCNF1, kH1, KV5.1



Immunohistochemical of paraffin-embedded human pancreas cancer using 13191-1-AP (KCNF1 antibody) at dilution of 1:100 (under 10x lens)



Immunohistochemical of paraffin-embedded human pancreas cancer using 13191-1-AP (KCNF1 antibody) at dilution of 1:100 (under 40x lens)



Transfected HEK-293 cells were subjected to SDS PAGE followed by western blot with 13191-1-AP (KCNF1 Antibody) at dilution of 1:1000

Applications

Tested applications:	ELISA, IHC, WB
Species specificity:	Human, Mouse, Rat; other species not tested.
Calculated KCNF1 MW:	494aa, 56 kDa
Observed KCNF1 MW:	
Positive WB detected in	Transfected HEK-293 cells
Positive IHC detected in	Human pancreas cancer tissue
Recommended dilution:	WB: 1:500-1:5000 IHC: 1:20-1:200

Application key: WB = Western blotting, IHC = Immunohistochemistry, IF = Immunofluorescence, IP = Immunoprecipitation

Immunogen information

Immunogen:	Ag3868
GenBank accession number:	BC026110
Gene ID (NCBI):	3754
Full name:	Potassium voltage-gated channel, subfamily F, member 1

Product information

Purification method:	Antigen affinity purification
Storage:	PBS with 0.1% sodium azide and 50% glycerol pH 7.3. Store at -20°C.