

Complement factor H Polyclonal Antibody

Catalog number: 12748-1-AP

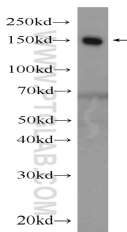
Size: 53 µg/150 µl

Source: Rabbit

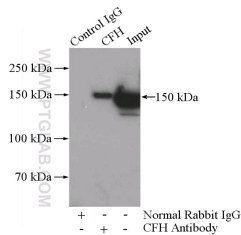
Isotype: IgG

Synonyms:

CFH; ARMD4, ARMS1, CFH, CFHL3, Complement factor H, Factor H, FH, FHL1, H factor 1, HF, HF1, HF2, HUS



human blood tissue were subjected to SDS PAGE followed by western blot with 12748-1-AP (CFH Antibody) at dilution of 1:1000



IP Result of anti-CFH (IP:12748-1-AP, 4µg; Detection:12748-1-AP 1:1000) with human plasma tissue lysate 4000µg.

Background

Complement factor H (CFH) is an abundant plasma glycoprotein that regulates the function of the alternative complement pathway in fluid phase and on cellular surfaces (PMID: 2963625). Factor H binds to C3b, accelerates the decay of the alternative pathway C3-convertase (C3bBb) and acts as a cofactor for the factor I-mediated proteolytic inactivation of C3b (PMID: 15163532). It plays a critical role in the homeostasis of the complement system in plasma and in the protection of bystander host cells and tissues from damage by complement activation. Abnormalities in factor H have been associated with renal disease (PMID: 18190458).

Applications

Tested applications:	ELISA, WB, IP
Species specificity:	Human; other species not tested.
Calculated Complement factor H MW:	1231aa,139 kDa
Observed Complement factor H MW:	150 kDa
Positive WB detected in	Human blood tissue
Positive IP detected in	Human plasma tissue
Recommended dilution:	WB: 1:500-1:5000 IP: 1:500-1:5000

Application key: WB = Western blotting, IHC = Immunohistochemistry, IF = Immunofluorescence, IP = Immunoprecipitation

Immunogen information

Immunogen:	Ag3482
GenBank accession number:	BC037285
Gene ID (NCBI):	3075
Full name:	Complement factor H

Product information

Purification method:	Antigen affinity purification
Storage:	PBS with 0.02% sodium azide and 50% glycerol pH 7.3. Store at -20°C.