

RASEF Polyclonal Antibody

Catalog number: 11569-1-AP

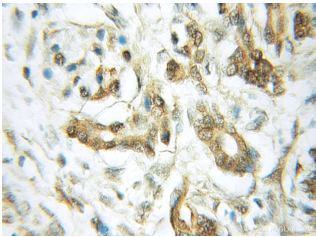
Size: 25 µg/150 µl

Source: Rabbit

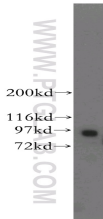
Isotype: IgG

Synonyms:

RASEF; FLJ31614, RAB45, Ras related protein Rab 45, RASEF



Immunohistochemical of paraffin-embedded human pancreas cancer using 11569-1-AP(RASEF antibody) at dilution of 1:50 (under 10x lens)



mouse testis tissue were subjected to SDS PAGE followed by western blot with 11569-1-AP(RASEF antibody) at dilution of 1:300

Applications

Tested applications:	ELISA, WB, IHC
Cited applications:	IF, IHC, IP, WB
Species specificity:	Human, Mouse; other species not tested.
Cited species:	Human
Calculated RASEF MW:	740aa,83 kDa
Observed RASEF MW:	83 kDa
Positive WB detected in	Mouse testis tissue
Positive IHC detected in	Human pancreas cancer tissue
Recommended dilution:	WB: 1:500-1:5000 IHC: 1:20-1:200

Application key: WB = Western blotting, IHC = Immunohistochemistry, IF = Immunofluorescence, IP = Immunoprecipitation

Immunogen information

Immunogen:	Ag2149
GenBank accession number:	BC023566
Gene ID (NCBI):	158158
Full name:	RAS and EF-hand domain containing

Product information

Purification method:	Antigen affinity purification
Storage:	PBS with 0.1% sodium azide and 50% glycerol pH 7.3. Store at -20°C.