

KRAS Polyclonal Antibody

Catalog number: 12063-1-AP

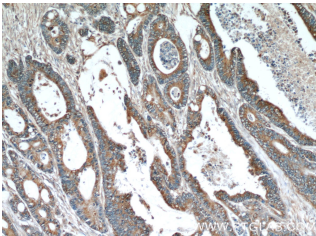
Size: 39 µg/150 µl

Source: Rabbit

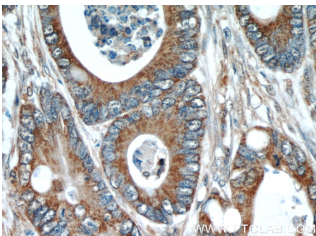
Isotype: IgG

Synonyms:

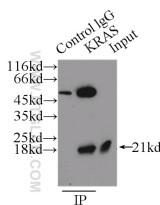
KRAS; C K RAS, c Ki ras,
GTPase KRas, K Ras 2, K
RAS2A, K RAS2B, K RAS4A, K
RAS4B, KI RAS, KRAS, KRAS1,
KRAS2, KRAS2B specific, Krasa,
Krasb, NS3, RASK2



Immunohistochemical of paraffin-embedded human colon cancer using 12063-1-AP (KRAS antibody) at dilution of 1:50 (under 10x lens)



Immunohistochemical of paraffin-embedded human colon cancer using 12063-1-AP (KRAS antibody) at dilution of 1:50 (under 40x lens)



IP Result of anti-KRAS (IP:12063-1-AP, 3µg; Detection:12063-1-AP 1:1000) with HeLa cells lysate 2500µg.

Background

KRAS, also called p21, is a member of the Ras superfamily of proteins. It is located on human chromosome 12, and contains four coding exons and a 5' non-coding exon (PMID: 12778136). KRAS is a membrane-anchored guanine triphosphate/guanosine diphosphate (GTP/GDP)-binding protein and is widely expressed in most human cells. Like other members of the Ras family, the KRAS protein is a GTPase, and it is involved in intracellular signal transduction and mainly responsible for EGFR-signaling activation (PMID: 19117687). KRAS mutations have been found in various malignancies, including lung adenocarcinoma, mucinous adenoma, ductal carcinoma of the pancreas and colorectal carcinoma. KRAS has two isoforms, a and b. This KRAS antibody (12063-1-AP) is a Pan-RAS antibody, which can recognize Kras, Hras and Nras.

Applications

Tested applications:	ELISA, WB, IP, FC, IHC
Cited applications:	IF, IHC, WB
Species specificity:	Human, Mouse, Rat; other species not tested.
Cited species:	Human, mouse, rat
Calculated KRAS MW:	188aa, 21 kDa
Observed KRAS MW:	21 kDa
Positive WB detected in	Mouse brain tissue, A549 cells, HEK-293 cells, HeLa cells, human brain tissue, human kidney tissue, mouse kidney tissue, rat brain tissue, rat kidney tissue
Positive IP detected in	HeLa cells
Positive IHC detected in	Human colon cancer tissue, human breast cancer tissue, human lung cancer tissue
Positive FC detected in	HeLa cells
Recommended dilution:	WB: 1:500-1:5000 IP: 1:500-1:5000 IHC: 1:20-1:200 FC: N/A

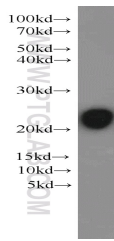
Application key: WB = Western blotting, IHC = Immunohistochemistry, IF = Immunofluorescence, IP = Immunoprecipitation

Immunogen information

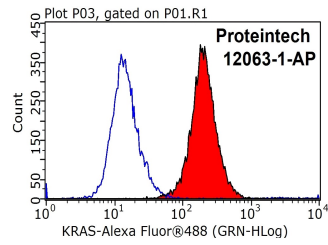
Immunogen:	Ag2700
GenBank accession number:	BC013572
Gene ID (NCBI):	3845
Full name:	V-Ki-ras2 Kirsten rat sarcoma viral oncogene homolog

Product information

Purification method:	Antigen affinity purification
Storage:	PBS with 0.1% sodium azide and 50% glycerol pH 7.3. Store at -20°C.



mouse brain tissue were subjected to SDS PAGE followed by western blot with 12063-1-AP(KRAS antibody) at dilution of 1:1000



1X10⁶ HeLa cells were stained with 0.2ug KRAS antibody (12063-1-AP, red) and control antibody (blue). Fixed with 90% MeOH blocked with 3% BSA (30 min). Alexa Fluor 488-conjugated AffiniPure Goat Anti-Rabbit IgG(H+L) with dilution 1:1000.