

PCTP Polyclonal Antibody

Catalog number: 11167-1-AP

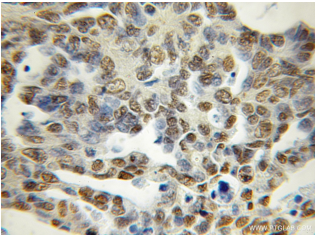
Size: 80 µg/150 µl

Source: Rabbit

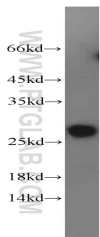
Isotype: IgG

Synonyms:

PCTP; PC TP, PCTP, STARD2



Immunohistochemical of paraffin-embedded human ovary tumor using 11167-1-AP(PCTP antibody) at dilution of 1:50 (under 10x lens)



human liver tissue were subjected to SDS PAGE followed by western blot with 11167-1-AP(PCTP antibody) at dilution of 1:300

Applications

Tested applications:	ELISA, WB, IHC
Species specificity:	Human; other species not tested.
Calculated PCTP MW:	25 kDa
Observed PCTP MW:	25-27 kDa
Positive WB detected in	Human liver tissue, human kidney tissue, K-562 cells
Positive IHC detected in	Human ovary tumor tissue
Recommended dilution:	WB: 1:200-1:2000 IHC: 1:20-1:200

Application key: WB = Western blotting, IHC = Immunohistochemistry, IF = Immunofluorescence, IP = Immunoprecipitation

Immunogen information

Immunogen:	Ag1647
GenBank accession number:	BC012084
Gene ID (NCBI):	58488
Full name:	Phosphatidylcholine transfer protein

Product information

Purification method:	Antigen affinity purification
Storage:	PBS with 0.1% sodium azide and 50% glycerol pH 7.3. Store at -20°C.