

## Palladin Polyclonal Antibody

Catalog number: 10853-1-AP

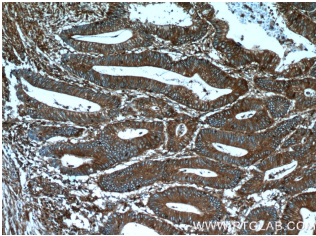
Size: 20 µg/150 µl

Source: Rabbit

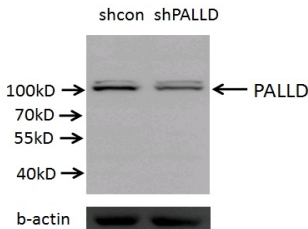
Isotype: IgG

Synonyms:

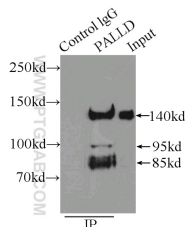
PALLD; CGI 151, FLJ22190, FLJ38193, FLJ39139, KIAA0992, palladin, PALLD, PNCA1, Sarcoma antigen NY SAR 77, SIH002



Immunohistochemistry of paraffin-embedded human colon cancer tissue slide using 10853-1-AP (PALLD, palladin Antibody) at dilution of 1:50 (under 10x lens)



A549 cells (shcontrol and shRNA of PALLD) were subjected to SDS PAGE followed by western blot with 10853-1-AP (PALLD antibody) at dilution of 1:2000. (Data provided by Angran Biotech (www.miRNAlab.com)).



IP Result of anti-PALLD, palladin (IP:10853-1-AP, 4µg; Detection:10853-1-AP 1:2000) with HeLa cells lysate 1800µg.

### Background

Palladin is an actin associated protein serving as a cytoskeleton scaffold, and actin cross linker, localizing at stress fibers, focal adhesions, and other actin based structures. Palladin exists as multiple isoforms through alternative transcription initiation sites and splicing. There are three major isoforms (200, 140, 90-92 kDa) and multiple minor isoforms. Different palladin isoforms are expressed in a tissue-specific pattern during development and in adult organs: the 200 kDa isoform is predominantly expressed in the heart, skeletal muscle, testis and bone; the 140 kDa isoform is widely expressed with the exception of liver, muscle, and skin; the 90-92 kDa isoform is broadly expressed in embryonic tissues and highly expressed in adult smooth muscle tissues (21455759). Recently overexpression of palladin has been linked to the promoted invasive motility in several types of cancers (18978809, 22291919). The 85-90 kDa palladin isoform has been observed predominantly expressed in pancreatic ductal adenocarcinoma (PDA) while a 65 kDa isoform is expressed in normal pancreas and non-PDA tumors (20436683). This antibody, generated against the fragment 999-1383aa of palladin, recognizes most isoforms of this protein, except isoform 6.

### Applications

Tested applications:	ELISA, WB, IP, IHC, FC, IF
Cited applications:	IF, IHC, IP, WB
Species specificity:	Human, Mouse; other species not tested.
Cited species:	Human, mouse, rat
Calculated Palladin MW:	1383aa, 151 kDa
Observed Palladin MW:	95 kDa, 140 kDa
Positive WB detected in	HeLa cells, A549 cells, HepG2 cells, mouse kidney tissue
Positive IP detected in	HeLa cells, HEK-293 cells
Positive IHC detected in	Human colon cancer tissue, human colon tissue, human ovary tumor tissue
Positive IF detected in	HeLa cells
Positive FC detected in	HeLa cells
Recommended dilution:	WB: 1:1000-1:10000 IP: 1:1000-1:10000 IHC: 1:20-1:200 IF: 1:20-1:200 FC: N/A

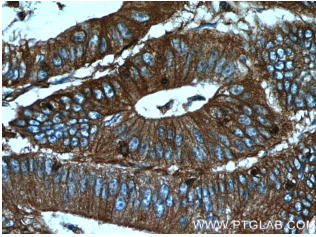
Application key: WB = Western blotting, IHC = Immunohistochemistry, IF = Immunofluorescence, IP = Immunoprecipitation

### Immunogen information

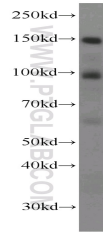
Immunogen:	Ag1288
GenBank accession number:	BC013867
Gene ID (NCBI):	23022
Full name:	Palladin, cytoskeletal associated protein

### Product information

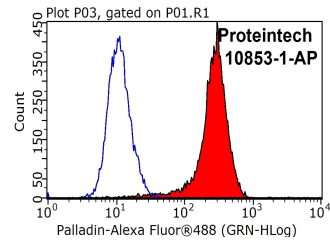
Purification method:	Antigen affinity purification
Storage:	PBS with 0.1% sodium azide and 50% glycerol pH 7.3. Store at -20°C.



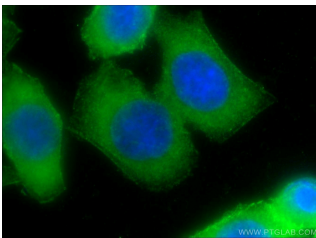
**Immunohistochemistry of paraffin-embedded human colon cancer tissue slide using 10853-1-AP (PALLD,palladin Antibody) at dilution of 1:50 (under 40x lens)**



**HeLa cells were subjected to SDS PAGE followed by western blot with 10853-1-AP(PALLD,palladin antibody) at dilution of 1:2000**



**1X10<sup>6</sup> HeLa cells were stained with 0.2ug PALLD,palladin antibody (10853-1-AP, red) and control antibody (blue). Fixed with 4% PFA blocked with 3% BSA (30 min). Alexa Fluor 488-conjugated AffiniPure Goat Anti-Rabbit IgG(H+L) with dilution 1:1000.**



**Immunofluorescent analysis of HeLa cells using 10853-1-AP( PALLD,palladin Antibody) at dilution of 1:50 and Alexa Fluor 488-conjugated AffiniPure Goat Anti-Rabbit IgG(H+L)**