

CHURC1 Polyclonal Antibody

Catalog number: 12247-1-AP

Size: 22 µg/150 µl

Source: Rabbit

Isotype: IgG

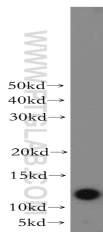
Synonyms:

CHURC1; C14orf52, chch,

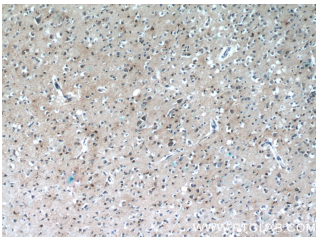
CHURC1, churchill domain

containing 1, FLJ33064, My015,

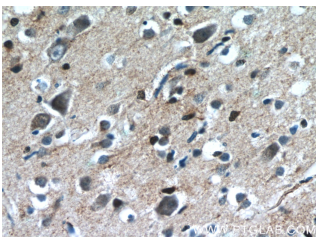
Protein Churchill



mouse skin tissue were subjected to SDS PAGE followed by western blot with 12247-1-AP(CHURC1 antibody) at dilution of 1:300



Immunohistochemistry of paraffin-embedded human brain tissue slide using 12247-1-AP(CHURC1 Antibody) at dilution of 1:50 (under 10x lens)



Immunohistochemistry of paraffin-embedded human brain tissue slide using 12247-1-AP(CHURC1 Antibody) at dilution of 1:50 (under 40x lens)

Background

CHURC1 (churchill domain containing 1), also known as C14orf52 or chch. The function of CHURC1 has not been widely studied, and is yet to be fully elucidated. It may be a transcriptional activator that mediates FGF signaling during neural development. The MW of this protein is 13 kDa, and Catalog#12247-1-AP specially recognises the 13 kDa protein.

Applications

Tested applications:	ELISA, IHC, WB
Species specificity:	Human, Mouse, Rat; other species not tested.
Calculated CHURC1 MW:	13 kDa
Observed CHURC1 MW:	13 kDa
Positive WB detected in	Mouse skin tissue, HeLa cells, mouse liver tissue, U-937 cells
Positive IHC detected in	Human brain tissue, human gliomas tissue, human kidney tissue
Recommended dilution:	WB: 1:200-1:1000 IHC: 1:20-1:200

Application key: WB = Western blotting, IHC = Immunohistochemistry, IF = Immunofluorescence, IP = Immunoprecipitation

Immunogen information

Immunogen:	Ag2892
GenBank accession number:	BC020550
Gene ID (NCBI):	91612
Full name:	Churchill domain containing 1

Product information

Purification method:	Antigen affinity purification
Storage:	PBS with 0.02% sodium azide and 50% glycerol pH 7.3. Store at -20°C.