

FAM175A Polyclonal Antibody

Catalog number: 14366-1-AP

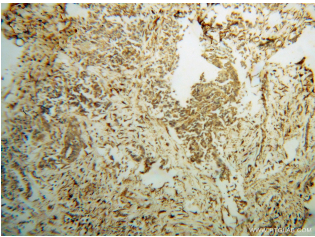
Size: 38 µg/150 µl

Source: Rabbit

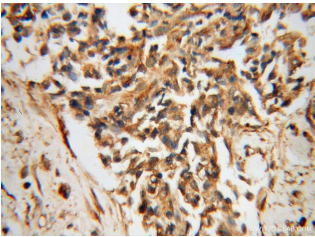
Isotype: IgG

Synonyms:

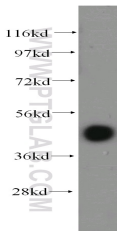
FAM175A; ABRA1, CCDC98,
FAM175A, FLJ11520, FLJ12642,
FLJ13614, Protein FAM175A



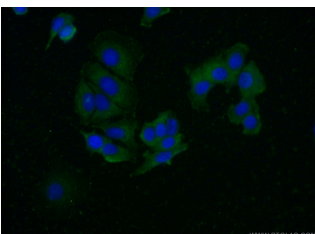
Immunohistochemical of paraffin-embedded human breast cancer using 14366-1-AP(FAM175A antibody) at dilution of 1:100 (under 10x lens)



Immunohistochemical of paraffin-embedded human breast cancer using 14366-1-AP(FAM175A antibody) at dilution of 1:100 (under 40x lens)



human testis tissue were subjected to SDS PAGE followed by western blot with 14366-1-AP(FAM175A antibody) at dilution of 1:500



Immunofluorescent analysis

Applications

Tested applications:	ELISA, WB, IHC, IF
Species specificity:	Human, Mouse, Rat; other species not tested.
Calculated FAM175A MW:	47 kDa
Observed FAM175A MW:	46 kDa
Positive WB detected in	Human testis tissue, MCF7 cells, Raji cells
Positive IHC detected in	Human breast cancer tissue
Positive IF detected in	MCF-7 cells
Recommended dilution:	WB: 1:500-1:5000
	IHC: 1:20-1:200
	IF: 1:20-1:200

Application key: WB = Western blotting, IHC = Immunohistochemistry, IF = Immunofluorescence, IP = Immunoprecipitation

Immunogen information

Immunogen:	Ag5688
GenBank accession number:	BC039573
Gene ID (NCBI):	84142
Full name:	Family with sequence similarity 175, member A

Product information

Purification method:	Antigen affinity purification
Storage:	PBS with 0.02% sodium azide and 50% glycerol pH 7.3. Store at -20°C.

of (-20 Ethanol) fixed MCF-7
cells using 14366-1-AP (FAM175A Antibody) at
dilution of 1:50 and Alexa
Fluor 488-conjugated
AffiniPure Goat Anti-Rabbit
IgG(H+L)