

## MIG6; ERFFI1 Polyclonal Antibody

Catalog number: 11630-1-AP

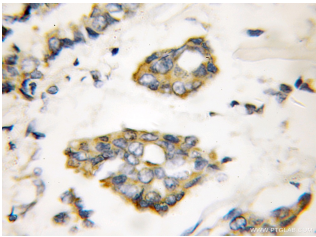
Size: 41 µg/150 µl

Source: Rabbit

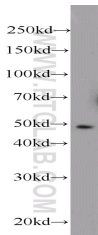
Isotype: IgG

Synonyms:

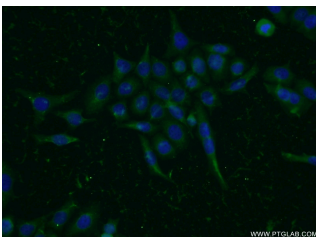
ERRFI1; ERFFI1, GENE 33, MIG 6, MIG6, RALT



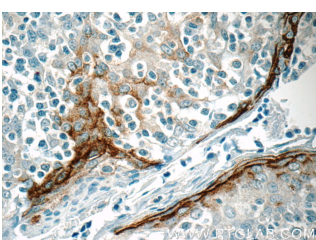
Immunohistochemical of paraffin-embedded human breast cancer using 11630-1-AP(MIG6; ERFFI1 antibody) at dilution of 1:50 (under 10x lens)



HeLa cells were subjected to SDS PAGE followed by western blot with 11630-1-AP(MIG6; ERFFI1 antibody) at dilution of 1:1000



Immunofluorescent analysis of PC-3 cells using 11630-1-AP( MIG6; ERFFI1 Antibody) at dilution of 1:50 and Alexa Fluor 488-conjugated AffiniPure Goat Anti-Rabbit IgG(H+L)



Immunohistochemistry of paraffin-embedded human

### Background

The mitogen inducible gene 6 (MIG6) is located in human chromosome 1p36, a locus frequently associated with human lung cancer. MIG6 gene expression can be rapidly induced by factors including hormones, growth factor, and stresses. MIG6 encodes ERBB receptor feedback inhibitor 1 (ERRFI1) levels of which are very low in quiescent cells but upregulated by mitogens. MIG6 may play important roles in regulating stress response, maintaining homeostasis in tissues like joints or cardiac muscle, and functioning as a tumor suppressor.

### Applications

Tested applications:	ELISA, IHC, WB, IF
Cited applications:	IHC, WB
Species specificity:	Human, Mouse, Rat; other species not tested.
Cited species:	Human, mouse
Calculated MIG6; ERFFI1 MW:	51 kDa
Observed MIG6; ERFFI1 MW:	51 kDa
Positive WB detected in	HeLa cells, human brain tissue, mouse brain tissue, rat colon tissue, Recombinant protein
Positive IHC detected in	Human breast cancer tissue, human tonsillitis tissue
Positive IF detected in	PC-3 cells
Recommended dilution:	WB: 1:500-1:5000 IHC: 1:20-1:200 IF: 1:20-1:200

Application key: WB = Western blotting, IHC = Immunohistochemistry, IF = Immunofluorescence, IP = Immunoprecipitation

### Immunogen information

Immunogen:	Ag2202
GenBank accession number:	BC025337
Gene ID (NCBI):	54206
Full name:	ERBB receptor feedback inhibitor 1

### Product information

Purification method:	Antigen affinity purification
Storage:	PBS with 0.1% sodium azide and 50% glycerol pH 7.3. Store at -20°C.

tonsillitis tissue slide using  
11630-1-AP (MIG6; ERRF1  
Antibody) at dilution of 1:50  
(under 40x lens)