

PSMF1 Polyclonal Antibody

Catalog number: 12941-1-AP

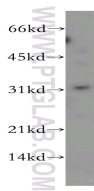
Size: 26 µg/150 µl

Source: Rabbit

Isotype: IgG

Synonyms:

PSMF1; hPI31, PI31, PSMF1



human kidney tissue were subjected to SDS PAGE followed by western blot with 12941-1-AP(PSMF1 antibody) at dilution of 1:500

Background

PSMF1 is also named as PI31(proteasome (prosome, macropain) inhibitor subunit 1) and belongs to proteasome inhibitor PI31 family. PI31, which localizes at the nuclear envelope/endoplasmic reticulum membrane, acts as a selective modulator of the proteasome-mediated steps in MHC class I antigen processing(PMID:18495667). PI31 does not inhibit cell-surface transport of glycoproteins in general and it may serve to control immunoproteasome formation and may thereby maintain an intracellular balance between constitutive and immunoproteasomes(PMID:12374861).

Applications

Tested applications:	ELISA, WB
Species specificity:	Human,Mouse,Rat; other species not tested.
Calculated PSMF1 MW:	30 kDa
Observed PSMF1 MW:	30 kDa
Positive WB detected in	Human kidney tissue, human heart tissue
Recommended dilution:	WB: 1:200-1:2000

Application key: WB = Western blotting, IHC = Immunohistochemistry, IF = Immunofluorescence, IP = Immunoprecipitation

Immunogen information

Immunogen:	Ag4011
GenBank accession number:	BC029836
Gene ID (NCBI):	9491
Full name:	Proteasome (prosome, macropain) inhibitor subunit 1 (PI31)

Product information

Purification method:	Antigen affinity purification
Storage:	PBS with 0.1% sodium azide and 50% glycerol pH 7.3. Store at -20°C.