

ELF2 Polyclonal Antibody

Catalog number: 12499-1-AP

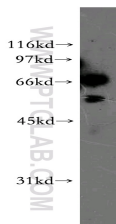
Size: 30 µg/150 µl

Source: Rabbit

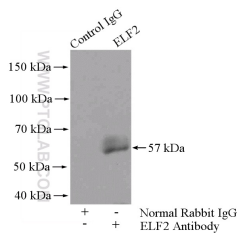
Isotype: IgG

Synonyms:

ELF2; E74 like factor 2, ELF2, EU32, NERF, NERF 1A, NERF 1a,b, NERF 1B, NERF 2, New ETS related factor



A2780 cells were subjected to SDS PAGE followed by western blot with 12499-1-AP(ELF2 antibody) at dilution of 1:500



IP Result of anti-ELF2 (IP:12499-1-AP, 4µg; Detection:12499-1-AP 1:500) with A2780 cells lysate 960µg.

Background

Ets-1 is the prototype member of a family of genes firstly identified on the basis of homology to the v-Ets oncogene isolated from the E26 erythroblastosis virus. Members of the Ets gene family have varied patterns of tissue expression, and share a highly conserved carboxy terminal domain containing a sequence related to the SV40 large T antigen nuclear localization signal sequence. This conserved domain is essential for Ets-1 binding to DNA and is likely to be responsible for the DNA binding activity of all members of the Ets gene family. ELF2 belongs to the Ets-1 family.

Applications

Tested applications:	ELISA, WB, IP
Species specificity:	Human, Mouse, Rat; other species not tested.
Calculated ELF2 MW:	533aa, 57 kDa
Observed ELF2 MW:	63-64kd, 56-57kd
Positive WB detected in	A2780 cells, human brain tissue, human liver tissue
Positive IP detected in	A2780 cells
Recommended dilution:	WB: 1:500-1:5000 IP: 1:200-1:2000

Application key: WB = Western blotting, IHC = Immunohistochemistry, IF = Immunofluorescence, IP = Immunoprecipitation

Immunogen information

Immunogen:	Ag3170
GenBank accession number:	BC034951
Gene ID (NCBI):	1998
Full name:	E74-like factor 2 (ets domain transcription factor)

Product information

Purification method:	Antigen affinity purification
Storage:	PBS with 0.02% sodium azide and 50% glycerol pH 7.3. Store at -20°C.