

## PITRM1 Polyclonal Antibody

Catalog number: 10101-2-AP

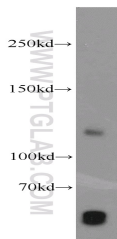
Size: 21 µg/150 µl

Source: Rabbit

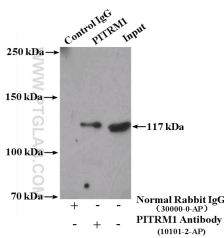
Isotype: IgG

Synonyms:

PITRM1; hMP1, hPreP,  
KIAA1104, Metalloprotease 1,  
MP1, pitrilysin  
metallopeptidase 1, Pitrilysin  
metalloproteinase 1, PITRM1,  
PreP



human placenta tissue were subjected to SDS PAGE followed by western blot with 10101-2-AP(PITRM1 antibody) at dilution of 1:300



IP Result of anti-PITRM1 (IP:10101-2-AP, 4ug; Detection:10101-2-AP 1:500) with A549 cells lysate 2000ug.

### Background

PITRM1 (Presequence protease, mitochondrial) is a ATP-independent protease that degrades mitochondrial transit peptides after their cleavage. It is specific for peptides in the range of 10 to 65 residues and able to degrade amyloid beta A4 (APP) protein when it accumulates in mitochondrion, suggesting a link with Alzheimer disease. It shows a preference for cleavage after small polar residues and before basic residues, but without any positional preference (PMID:16849325). This protein has a calculated molecular mass of 117kD and it is expressed widely. This antibody is specific to PITRM1.

### Applications

Tested applications:	ELISA, WB, IP
Cited applications:	WB
Species specificity:	Human, Mouse, Rat; other species not tested.
Cited species:	Mouse
Calculated PITRM1 MW:	60 kDa, 117 kDa
Observed PITRM1 MW:	110-117 kDa
Positive WB detected in	Human placenta tissue, A549 cells, mouse testis tissue
Positive IP detected in	A549 cells
Recommended dilution:	WB: 1:200-1:1000 IP: 1:200-1:2000

Application key: WB = Western blotting, IHC = Immunohistochemistry, IF = Immunofluorescence, IP = Immunoprecipitation

### Immunogen information

Immunogen:	Ag0150
GenBank accession number:	BC001150
Gene ID (NCBI):	10531
Full name:	Pitrilysin metalloproteinase 1

### Product information

Purification method:	Antigen affinity purification
Storage:	PBS with 0.1% sodium azide and 50% glycerol pH 7.3. Store at -20°C.