

SLC25A46 Polyclonal Antibody

Catalog number: 12277-1-AP

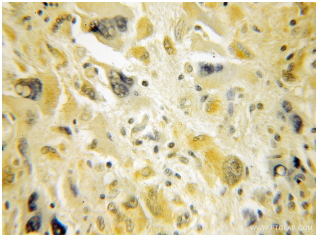
Size: 35 µg/150 µl

Source: Rabbit

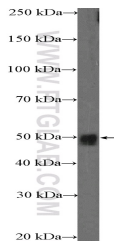
Isotype: IgG

Synonyms:

SLC25A46; SLC25A46, TB1



Immunohistochemical of paraffin-embedded human medulloblastoma using 12277-1-AP(SLC25A46 antibody) at dilution of 1:50 (under 10x lens)



MCF-7 cells were subjected to SDS PAGE followed by western blot with 12277-1-AP(SLC25A46 Antibody) at dilution of 1:600

Background

SLC25A46 belongs to the SLC25 family of mitochondrial carrier proteins. It can produce 46 kDa, 37 kDa and 30 kDa isoforms of SLC25A46.

Applications

Tested applications:	ELISA, IHC, WB
Species specificity:	Human, Mouse, Rat; other species not tested.
Calculated SLC25A46 MW:	418aa, 46 kDa
Observed SLC25A46 MW:	46 kDa
Positive WB detected in	MCF-7 cells, human brain tissue
Positive IHC detected in	Human medulloblastoma tissue
Recommended dilution:	WB: 1:200-1:2000 IHC: 1:20-1:200

Application key: WB = Western blotting, IHC = Immunohistochemistry, IF = Immunofluorescence, IP = Immunoprecipitation

Immunogen information

Immunogen:	Ag2923
GenBank accession number:	BC017169
Gene ID (NCBI):	91137
Full name:	Solute carrier family 25, member 46

Product information

Purification method:	Antigen affinity purification
Storage:	PBS with 0.1% sodium azide and 50% glycerol pH 7.3. Store at -20°C.