

DLX3 Polyclonal Antibody

Catalog number: 13261-3-AP

Size: 53 µg/150 µl

Source: Rabbit

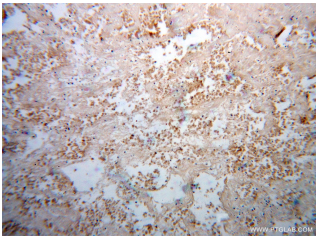
Isotype: IgG

Synonyms:

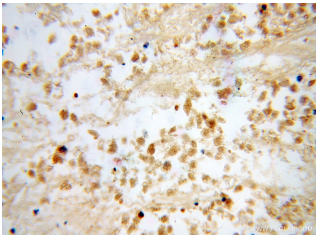
DLX3; AI4, distal less homeobox

3, DLX3, Homeobox protein

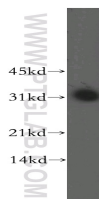
DLX 3, TDO



Immunohistochemical of paraffin-embedded human lung cancer using 13261-3-AP(DLX3 antibody) at dilution of 1:100 (under 10x lens)



Immunohistochemical of paraffin-embedded human lung cancer using 13261-3-AP(DLX3 antibody) at dilution of 1:100 (under 40x lens)



mouse lung tissue were subjected to SDS PAGE followed by western blot with 13261-3-AP(DLX3 antibody) at dilution of 1:1000

Applications

Tested applications:	ELISA, WB, IHC
Species specificity:	Human, Mouse, Rat; other species not tested.
Calculated DLX3 MW:	287aa, 32kd
Observed DLX3 MW:	32kd
Positive WB detected in:	Mouse lung tissue
Positive IHC detected in:	Human lung cancer tissue
Recommended dilution:	WB: 1:500 - 1:2000 IHC: 1:50 - 1:200

Application key: WB = Western blotting, IHC = Immunohistochemistry, IF = Immunofluorescence, IP = Immunoprecipitation

Immunogen information

Immunogen:	Ag3865
GenBank accession number:	BC028970
Gene ID (NCBI):	1747
Full name:	Distal-less homeobox 3

Product information

Purification method:	Antigen affinity purification
Storage:	PBS with 0.02% sodium azide and 50% glycerol pH 7.3. Store at -20°C.