

## DTX3L Polyclonal Antibody

Catalog number: 11963-1-AP

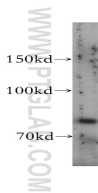
Size: 20 µg/150 µl

Source: Rabbit

Isotype: IgG

Synonyms:

DTX3L; DTX3L, deltex 3 like  
(Drosophila), Rhysin 2, Protein  
deltex 3 like, Rhysin2



human lung tissue were subjected to SDS PAGE followed by western blot with 11963-1-AP(DTX3L antibody) at dilution of 1:500

### Applications

Tested applications:	ELISA, WB
Species specificity:	Human; other species not tested.
Calculated DTX3L MW:	740aa,84 kDa
Observed DTX3L MW:	84kd
Positive WB detected in	Human lung tissue
Recommended dilution:	WB: 1:200-1:2000

Application key: WB = Western blotting, IHC = Immunohistochemistry, IF = Immunofluorescence, IP = Immunoprecipitation

### Immunogen information

Immunogen:	Ag2568
GenBank accession number:	BC060509
Gene ID (NCBI):	151636
Full name:	Deltex 3-like (Drosophila)

### Product information

Purification method:	Antigen affinity purification
Storage:	PBS with 0.1% sodium azide and 50% glycerol pH 7.3. Store at -20°C.