

ENPP6 Polyclonal Antibody

Catalog number: 12643-1-AP

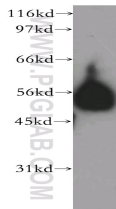
Size: 37 µg/150 µl

Source: Rabbit

Isotype: IgG

Synonyms:

ENPP6; MGC33971; NPP6



human brain tissue were subjected to SDS PAGE followed by western blot with 12643-1-AP(ENPP6 Antibody) at dilution of 1:2000

Applications

Tested applications:	ELISA, WB
Species specificity:	Human, mouse, rat; other species not tested.
Positive WB detected in:	Human brain tissue, HEK-293 cells
Calculated ENPP6 MW:	440aa,50kd
Observed ENPP6 MW:	50kd
Recommended dilution:	WB: 1:1000-1:10000

Application key: WB = Western blotting, IHC = Immunohistochemistry, IF = Immunofluorescence, IP =

Immunoprecipitation, FC = Flow cytometry

Immunogen information

Immunogen:	Ag3339
GenBank accession number:	BC035035
Gene ID (NCBI):	133121
Full name:	Ectonucleotide pyrophosphatase/phosphodiesterase 6

Product information

Purification method:	Antigen affinity purification
Storage:	PBS with 0.1% sodium azide and 50% glycerol pH 7.3. Store at -20°C.