



Wi-Fi/Ethernet connected Traceable® Data Loggers with TraceableLIVE® Cloud Service

Monitor Critical Environments with Ease
—Choose Wi-Fi or Ethernet connectivity
—New and improved user interface

New Prepaid Subscription Packages available online

Simply add a package to your device order for easy purchase

1- and 2-year options available in standard and premium
— see page 4 for details



traceable.com

1.800.323.4340

Traceable is an Antylia Scientific company
Find out more at antylia.com



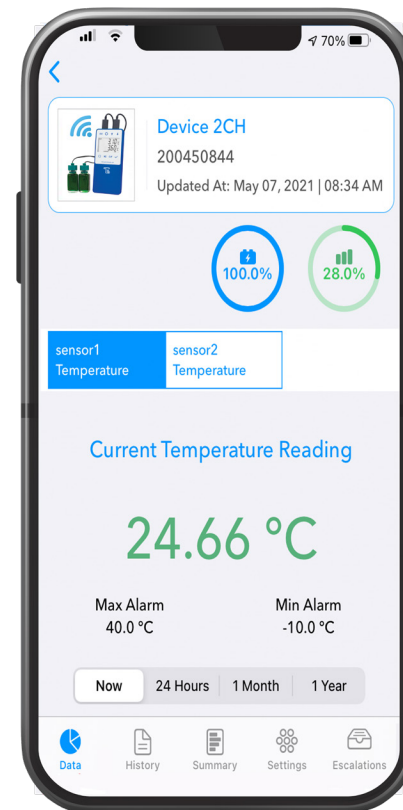
TraceableLIVE® Cloud Service for remote monitoring and ease of mind

Refrigerator/Freezers • ULT Freezers • Chemical Storerooms • Greenhouses • Cryogenic (LN₂) Storage • Controlled Warehouses

Ideal for labs, research organizations, clinics, healthcare providers and anyone who requires that samples remain within set tolerances for temperature, humidity, barometric pressure, or CO₂. Protect your vaccines, pharmaceuticals, biological materials, or other product from degrading due to improper storage or transport conditions.

TraceableLIVE Cloud Service

- Cloud-based application—no local software required; web, Android™, iOS data visibility
- Receive mobile push, e-mail, text notifications
- Easy setup with mobile QR code
- Continuous data transmission and monitoring using SSL-encrypted SECURE connection
- Generate data reports in real time, data backup guaranteed
- View conditions and set alarm parameters on device remotely
- Expanded use with 21 CFR Part 11 compliance with premium subscription



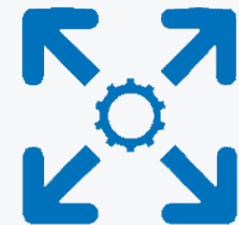
Reduce Your Risk

Real-time, remote monitoring—receive email, in app messages, or text alerts



Easy Mobile Setup

Get connected to your devices and start monitoring in less than 2 minutes

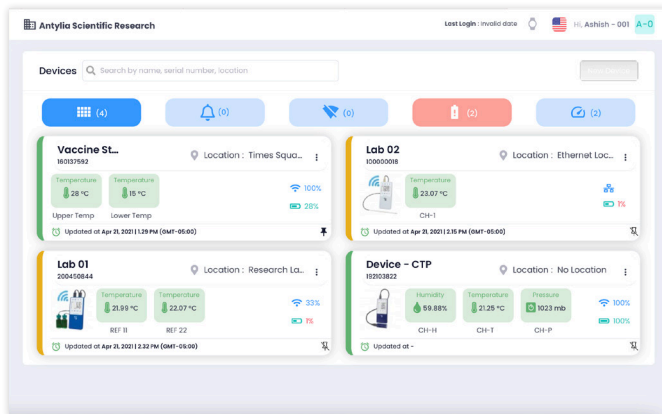


Broad-Range Applications

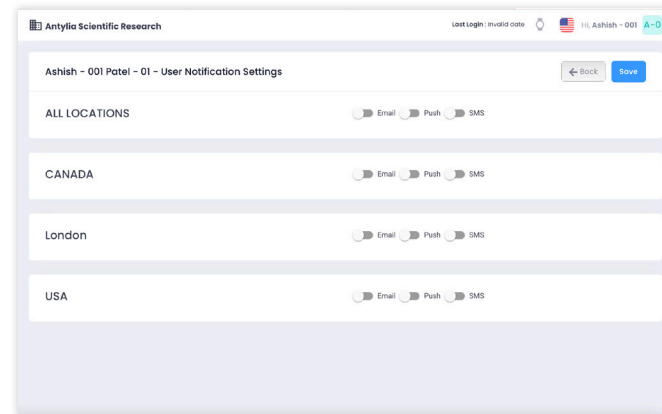
Temperature, humidity, barometric pressure, CO₂



Personalize dashboards to immediately see data that is important to you.

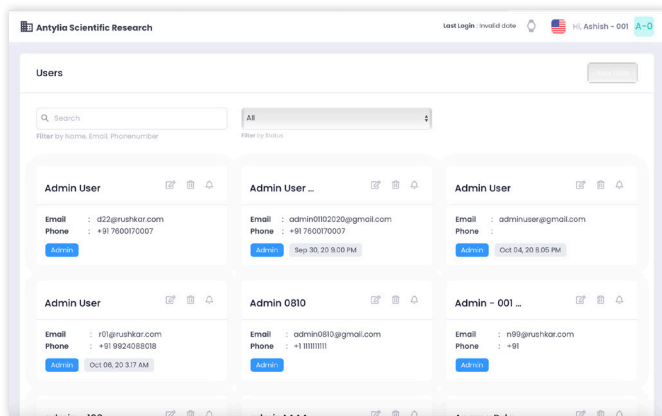


Quickly find devices by name, location, or alarm status.

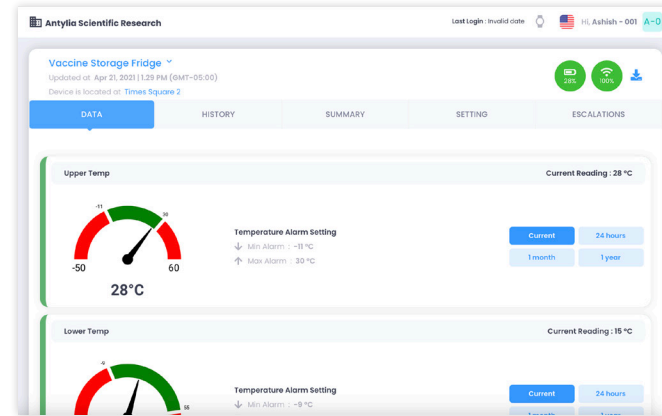


You can even set notifications to escalate to other team members if alerts are not addressed.

Choose how you want to get notified of any alert status. Each location allows up to 3 notification types: email, in app messages, or text alerts.



Easily manage user access and device details.



View device data by channel, a specific time, or current time.

At a glance see readings, alarm settings and statuses, Wi-Fi strength, battery level, and more.



New Prepaid Subscription Packages

Now you can get TraceableLIVE without monthly charges on your credit card. Simply order a subscription for 1 or 2 years. You can add it to your new TraceableLIVE product purchase or order it alone to add to one of your current TraceableLIVE devices.

FREE

- E-mail and push alarms
- 1 user only
- 1 month data storage
- Up to 3 devices

Standard

\$100

1 Year/Device

\$200

2 Years/Device

- E-mail and push alarms
- Optional SMS text notifications*
- Unlimited users, data storage
- Unlimited devices

Monthly subscription available
[\\$8.99/Device on traceablelive.com](https://traceablelive.com)

*SMS Text notifications add \$2+/-/month/device (credit card only).

Premium

\$165

1 Year/Device

\$330

2 Years/Device

- E-mail and push alarms
- SMS text notifications included
- Unlimited users, data storage
- Unlimited devices

21 CFR Part 11 compliance**

Monthly subscription available
[\\$14.99/Device on traceablelive.com](https://traceablelive.com)

**Meets 21 CFR Part 11 North American Compliance and Annex 11 for Europe.

Prepaid Subscription Packages

Description	Item number
1 year Standard TraceableLIVE Subscription	ML-63003-36
2 year Standard TraceableLIVE Subscription	ML-63003-37
1 year Premium TraceableLIVE Subscription	ML-63003-38
2 year Premium TraceableLIVE Subscription	ML-63003-39

Traceable® Wi-Fi Data Loggers compatible with TraceableLIVE® Cloud Service*

Get immediate alerts before you lose valuable samples

- Wi-Fi enabled digital data logger connects easily to network and provides continuous data transmission to the app interface
- Ideal for use in healthcare and vaccine monitoring (VFC compliant**)

What's Included: Probe with 10-ft (3-m) cable or USB dongle that is inserted into device, holder with magnetic back, four AAA alkaline batteries, and NIST-traceable calibration certificate with data.

Parameters	Range	Resolution	Accuracy	Probe	Item number
Temperature	-50.00 to 60.00°C (-58.00 to 140.00°F)	0.01°	±0.25°C	2 glycol-filled temperature buffered bottles probes	ML-99460-00
				1 bottle & 1 bullet	ML-99460-05
				2 plastic bullet waterproof probes	ML-99460-10
				2 stainless steel 316 probes	ML-99460-15
ULT Temperature	-90.00 to 105.00°C (-130.00 to 221.00°F)	0.01°	±0.1°C	1 platinum RTD sensor, stainless steel 316 probe	ML-18000-27
				2 platinum RTD sensor, stainless steel 316 probes	ML-18000-28
LN ₂ Temperature	-200.00 to 105.00°C (-328.00 to 221.00°F)	0.01°	±0.25°C	1 platinum RTD sensor, stainless steel 316 probe	ML-18001-08
				2 platinum RTD sensor, stainless steel 316 probes	ML-18001-09
High Temperature	0.00 to 300.00°C (32.00 to 572.00°F)	0.01°	±0.25°C	1 platinum RTD sensor, stainless steel 316 probe	ML-18004-26
				2 platinum RTD sensor, stainless steel 316 probes	ML-18004-27
Temperature Humidity	0.00 to 55.00°C (32.00 to 131.00°F)	0.01°	±0.4°C ±3% (20 to 80% RH), ±5% otherwise	1 ambient dongle sensor	ML-18000-29
	0.0 to 100%RH (noncondensing)			1% 1 external probe sensor on 3' cable	ML-18000-30
CO ₂ Temperature Humidity	0 to 10,000 ppm	0.01°	4% reading + 100 ppm ± 0.4°C ±3% (5 to 75% RH), ±5% otherwise	1 ambient dongle sensor	ML-18000-31
	0.00 to 50.00°C (32.00 to 122.00°F)				
	0 to 95% (noncondensing)				
CO ₂ Temperature Humidity	0.00 to 20.00%	0.01%	4% reading + 1% full scale ± 0.4°C ±3% (5 to 75% RH), ±5% otherwise	1 external probe sensor on 3' cable	ML-18000-32
	0.00 to 50.00°C (32.00 to 122.00°F)				
	0 to 95% (noncondensing)				
Barometric Pressure Temperature Humidity	500 to 1100 millibars (mb)	0.01°	±4 mbar ±0.4°C ±3% (5 to 75% RH), ±5% otherwise	1 ambient dongle sensor	ML-18000-33
	0 to 55°C (32 to 131°F)				
	0 to 100% RH (noncondensing)				

*A TraceableLIVE account is required for TraceableLIVE remote services.

**Temperature-buffered bottle probes meet requirements for VFC (Vaccine for Children Program).



Traceable® Refrigerator/Freezer
Data Logger Thermometer

99460-00



Traceable® RH/Temperature
Data Logger with Ambient sensor

18000-29



Traceable® CO₂/RH/Temperature
Data Logger with external probe

18000-32

Traceable[®] Ethernet Data Logging Thermometers compatible with TraceableLIVE[®] Cloud Service*

Always on, always connected

- Thermometer recalibration is accomplished by simply replacing the probe
- View current temperature conditions anywhere—cloud-based interface sends email, text, and push notifications
- Connect to your data via smartphone, tablet, or PC using TraceableLIVE cloud service*

These data logging thermometers with Ethernet offer an easy and secure way to connect your smartphone, tablet or personal computer remotely with your water baths, refrigerators, freezers and biological/pharmaceutical lab equipment.

Once setup is complete, you can securely monitor parameters 24/7, control your alarms remotely, view your data logging history, run reports in real time and give access to other team members. Each thermometer includes a replaceable, calibrated probe. Thermometer 99469-01 includes a bottle probe filled with nontoxic glycol protecting it from rapid temperature changes when the refrigerator or freezer door is opened. Thermometer 18004-37 comes with a stainless steel probe that measures a wide range of temperatures.

What's Included: Probe with 10-ft (3-m) cable, holder with magnetic back, Ethernet cable, universal power adapter and plug with 5-ft (1.5-m) cord, three AAA alkaline batteries, and NIST-traceable calibration certificate.

Description	Range	Accuracy	Item number
Ethernet Data Logging Thermometer with Bottle Probe	-50.00 to 60.00°C (-58.00 to 140.00°F)	±0.25°C	ML-99460-01
Replacement Bottle Probe (calibrated) (for 99460-01 only)			ML-99460-02
Ethernet Data Logging Thermometer with Stainless Steel Probe	-90.00 to 105.00°C (-130.00 to 221.00°F)		ML-18004-37
Replacement Stainless Steel Probe (calibrated) (for 18004-37 only)			ML-18004-38

*A TraceableLIVE account is required for TraceableLIVE Cloud service.

traceable.com

USA: 1-800-323-4340
1-847-549-7600

Canada: 1-800-363-5900
China: +86-21-5109-9909
France: +33 (0) 1486 37800
Germany: +49 (0) 9377 92030

India: 1-800-266-1244
Italy: +39 (0) 1313 89513
UK: +44 (0) 1480-272279
All other countries: 1-847-549-7600

Traceable is an Antylia Scientific company
Find out more at antylia.com



Traceable[®] Ethernet
Data Logging Refrigerator/Freezer
Thermometer
99460-01



Top view

