

DMC1 Polyclonal Antibody

Catalog number: 13714-1-AP

Size: 34 µg/150 µl

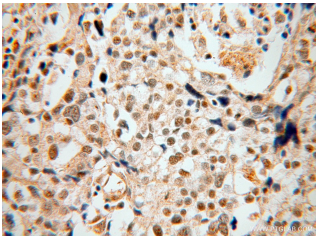
Source: Rabbit

Isotype: IgG

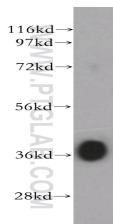
Synonyms:

DMC1; dJ199H16.1, DMC1,

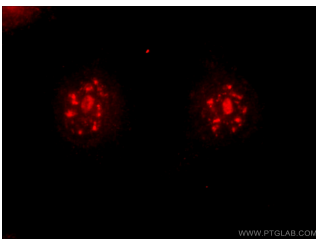
DMC1H, HsLim15, LIM15



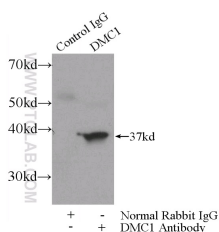
Immunohistochemical of paraffin-embedded human ovary tumor using 13714-1-AP(DMC1 antibody) at dilution of 1:100 (under 40x lens)



mouse spermatophore tissue were subjected to SDS PAGE followed by western blot with 13714-1-AP(DMC1 antibody) at dilution of 1:1000



Immunofluorescent analysis of HeLa cells using 13714-1-AP(DMC1 Antibody) at dilution of 1:50 and Rhodamine-Goat anti-Rabbit IgG



IP Result of anti-DMC1

(IP:13714-1-AP, 3µg;

Detection:13714-1-AP 1:600)

Applications

Tested applications:

ELISA, WB, IHC, IF, IP

Species specificity:

Human,Mouse,Rat; other species not tested.

Calculated DMC1 MW:

165aa,18 kDa,38 kDa

Observed DMC1 MW:

37 kDa

Positive WB detected in

Mouse spermatophore tissue, HeLa cells, human testis tissue

Positive IP detected in

Mouse testis tissue

Positive IHC detected in

Human ovary tumor tissue

Positive IF detected in

HeLa cells

Recommended dilution:

WB: 1:1000-1:10000

IP: 1:200-1:2000

IHC: 1:20-1:200

IF: 1:20-1:200

Application key: WB = Western blotting, IHC = Immunohistochemistry, IF = Immunofluorescence, IP = Immunoprecipitation

Immunogen information

Immunogen:

Ag4653

GenBank accession number:

BC035658

Gene ID (NCBI):

11144

Full name:

DMC1 dosage suppressor of mck1 homolog, meiosis-specific homologous recombination (yeast)

Product information

Purification method:

Antigen affinity purification

Storage:

PBS with 0.02% sodium azide and 50% glycerol pH 7.3. Store at -20°C.

with mouse testis tissue lysate
4800ug.