

RGS2 Polyclonal Antibody

Catalog number: 10678-1-AP

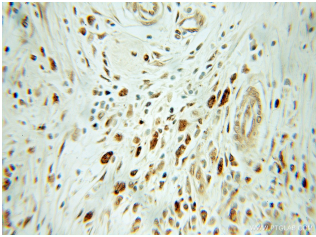
Size: 33 µg/150 µl

Source: Rabbit

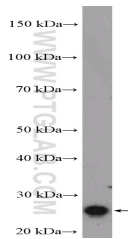
Isotype: IgG

Synonyms:

RGS2; G0S8, RGS2



Immunohistochemical of paraffin-embedded human pancreas cancer using 10678-1-AP (RGS2 antibody) at dilution of 1:50 (under 10x lens)



fetal human brain tissue were subjected to SDS PAGE followed by western blot with 10678-1-AP (RGS2 Antibody) at dilution of 1:600

Applications

Tested applications:	ELISA, IHC, WB
Cited applications:	WB
Species specificity:	Human; other species not tested.
Cited species:	Human
Calculated RGS2 MW:	24 kDa
Observed RGS2 MW:	30-32 kDa
Positive WB detected in	Fetal human brain tissue, human brain tissue
Positive IHC detected in	Human pancreas cancer tissue
Recommended dilution:	WB: 1:200-1:2000 IHC: 1:20-1:200

Application key: WB = Western blotting, IHC = Immunohistochemistry, IF = Immunofluorescence, IP = Immunoprecipitation

Immunogen information

Immunogen:	Ag1066
GenBank accession number:	BC007049
Gene ID (NCBI):	5997
Full name:	Regulator of G-protein signaling 2, 24kDa

Product information

Purification method:	Antigen affinity purification
Storage:	PBS with 0.1% sodium azide and 50% glycerol pH 7.3. Store at -20°C.