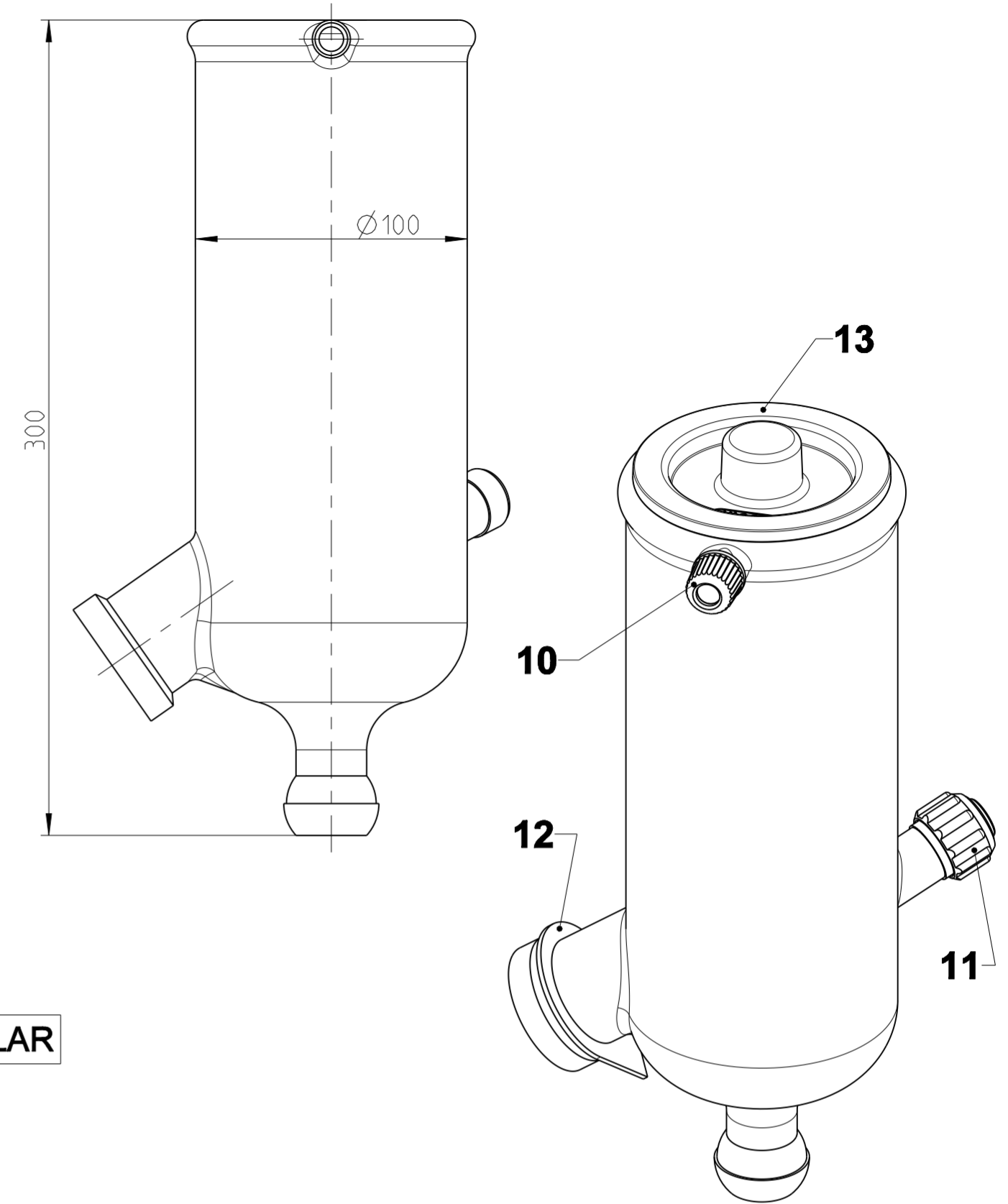
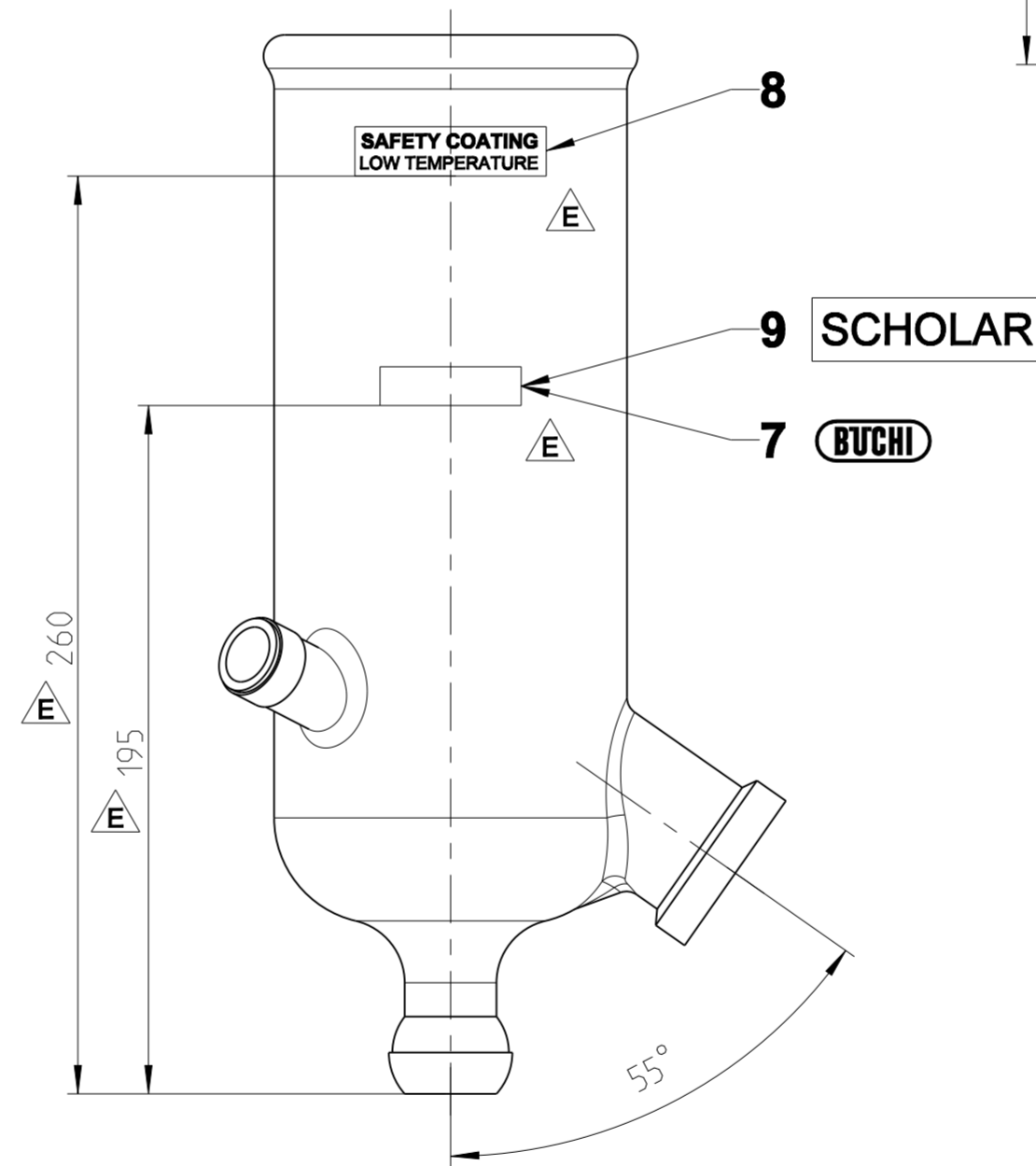
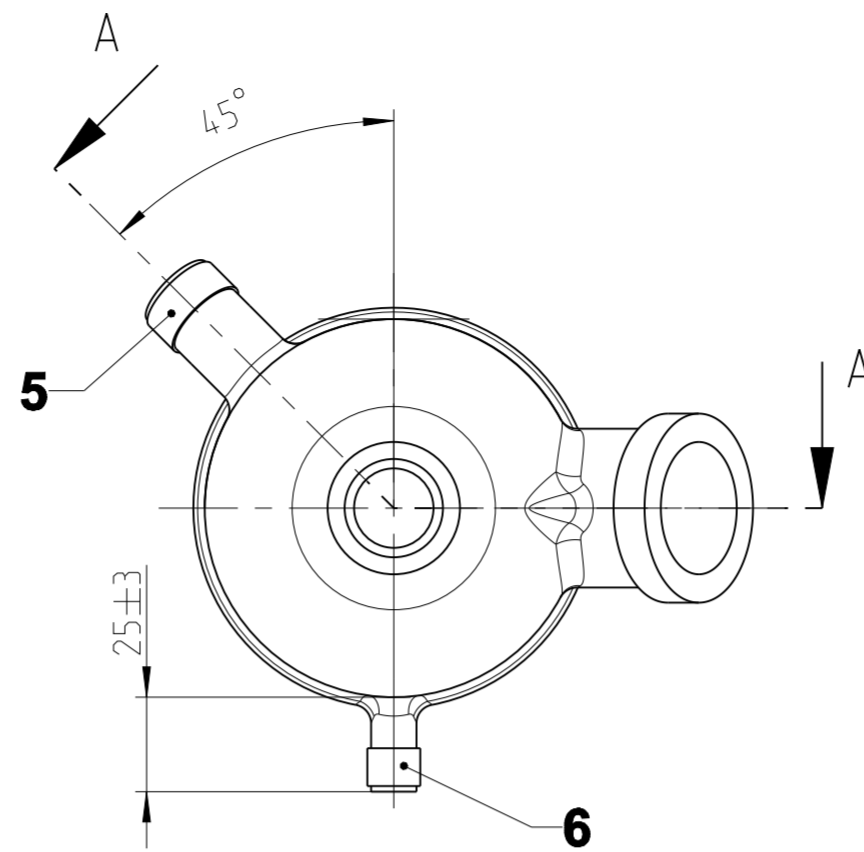
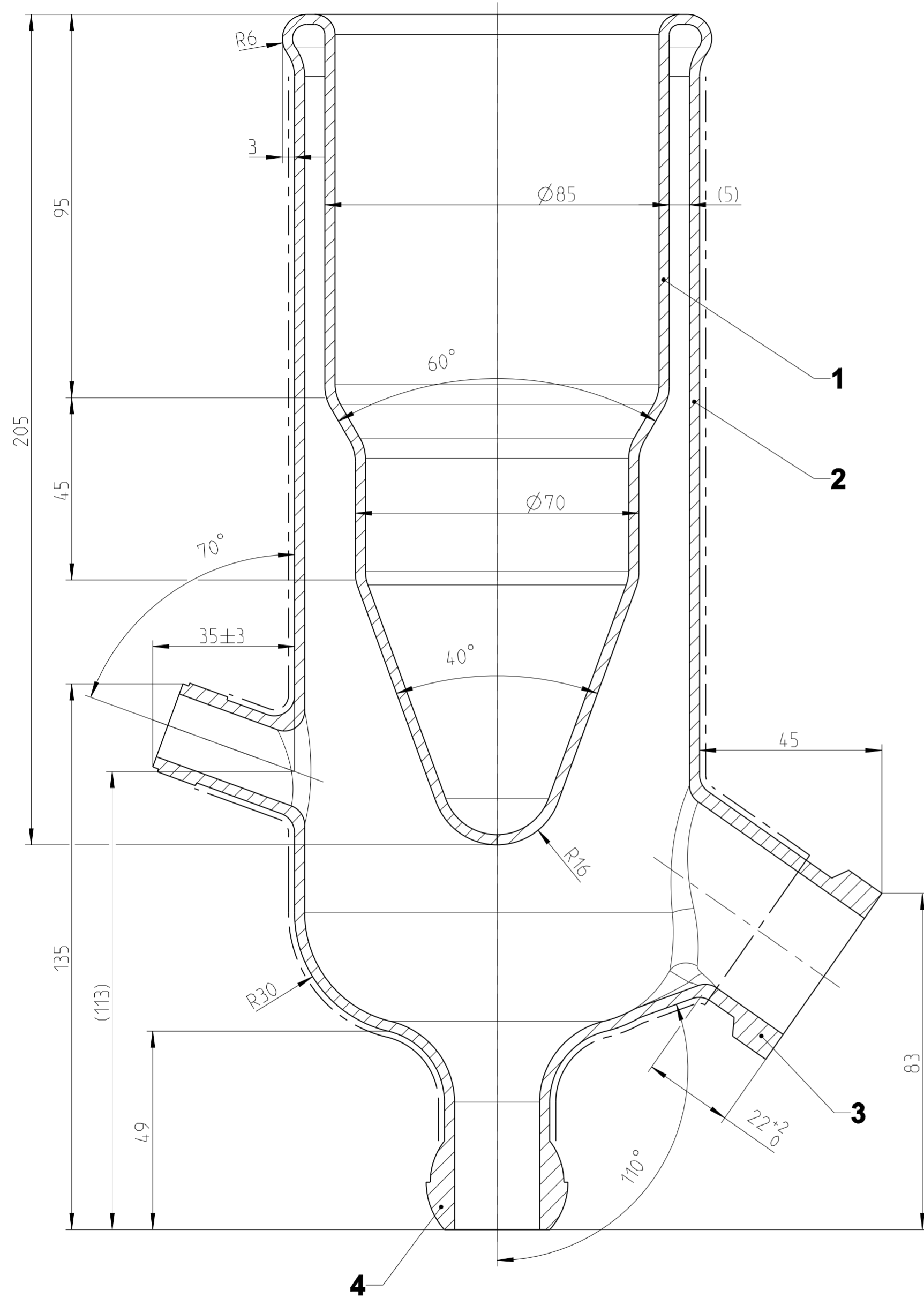


A-A
1:1



			11075731	11075732
- Beschichtung nach / Coating according to 11063475			△ P+G LT	
Pos.	Bez.	Descr.	HQ / BOI no.	Qty.
1	Glasrohr 85x2.5	Glass tube 85x2.5	000126	1
2	Glasrohr 100x2.5	Glass tube 100x2.5	000129	1
3	Flansch D50/10 HF	Flange D50/10 HF	040690	1
4	Kugelschliff S35/21	Ground ball S35/21	000870	1
5	Glasgewinde SVL22 1-fach HF	Glass thread SVL22 single HF	025507	1
6	Glasgewinde GL14	Glass thread GL14	018870	1
7	Einbrennschild 32.8x12	Burn in sign 32.8x12	-	007303
8	Einbrennschild SAFETY COAT. LT	Burn in label SAFETY COAT. LT	11081429	1
9	Einbrennschild SCHOLAR	Burn in label SCHOLAR	11081427	-
10	Überwurfmutter GL14	Cap nut GL14	033577	1
11	Belüftungszapfen kpl.	Aeration plug cpl.	046574	1
12	Manschette	Drain sleeve	028606	1
13	Deckel Kühlfalle C	Cover cold trap C	11075812	1
14	Set Schrauboliven geb. 3 Stk.	Set bent hose nipple 3 pcs	041987	1

GENERAL TOLERANCES GLAS PRODUCTION	MANUAL PROCESSING					MACHINE PROCESSING			
	Gesamtlänge (total length)	Axialer Ansatz (axial attachment)	Radialer Ansatz (radial attachment)	Aussendurchmesser (outside diameter)	Winkel (angle)	NOMINAL ∅	Aussendurchmesser (outside diameter)	Innendurchmesser (inside diameter)	
	Tolerance (mm)					(°)	Tolerance (mm)		
>0-10	±1	±2	±2	±2.1	±5	>0-50	±1	±1	
>10-50	±2	±4	±4	±4.1	±5	>10-50	±1	±1.5	
>50-300	±4	±4	±4	±7.3	±5	>50-300	±1.5	±3	
>300	±5	±5	±5	±11	±5	>300-1000	±3	±5	

Kühlfläche / Cooling surface: 0.045 m²

Achtung: Keine Glasfehler erlaubt
Attention: No glass mistakes allowed

Name	Date	Finish	Staub- und fettfrei / Clean of dust and grease	
Created	bies	23.11.2022	Material Borosilikat 3.3	
Approved	balp	19.02.2024	Bezeichnung Kühlfalle C R-80	
Change Text	008/24	Description Cold Trap C R-80		
		Document No.	11075651	Rev E
State	Serie	ISO 13715	ISO 1302	ISO 128-30
Büchi Labortechnik AG Meierseggstrasse 40 9230 Flawil - Switzerland		Scale	1:2	Unit mm
		Format	A2	Page 1 / 1