

For Research Use Only

FAM92A1 Polyclonal ANTIBODY



Catalog Number: 24803-1-AP

Featured Product

1 Publications

Basic Information

Catalog Number:
24803-1-AP

Size:
45 µg/150 µl

Source:
Rabbit

Isotype:
IgG

Purification Method:
Antigen affinity purification

Immunogen Catalog Number:
AG20738

GenBank Accession Number:
BC014598

GeneID (NCBI):
137392

Full Name:
family with sequence similarity 92, member A1

Calculated MW:
289aa, 33 kDa

Observed MW:
29-33 kDa

Recommended Dilutions:

WB 1:200-1:2000

IP 1:200-1:2000

IHC 1:20-1:200

IF 1:20-1:200

Applications

Tested Applications:
ELISA, IHC, WB, IF, IP

Cited Applications:
IF, WB

Species Specificity:
Human

Cited Species:
HUMAN

Positive Controls:

WB : HeLa cells;

IP : HeLa cells;

IHC : human renal cell carcinoma tissue;

IF : HeLa cells;

Background Information

Notable Publications

Author	Pubmed ID	Journal	Application
Feng-Qian Li	27528616	Mol Cell Biol	WB,IF

Storage

Storage:

Store at -20°C. Stable for one year after shipment.

Storage Buffer:

PBS with 0.1% sodium azide and 50% glycerol pH 7.3.

Aliquoting is unnecessary for -20°C storage

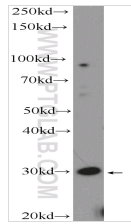
For technical support and original validation data for this product please contact:

T: 1 (888) 4PTGLAB (1-888-478-4522) (toll free in USA), or 1(312) 455-8498 (outside USA)

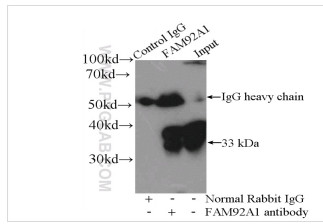
E: proteintech@ptglab.com
W: ptglab.com

This product is exclusively available under Proteintech Group brand and is not available to purchase from any other manufacturer.

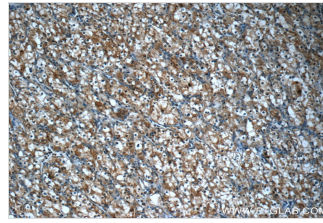
Selected Validation Data



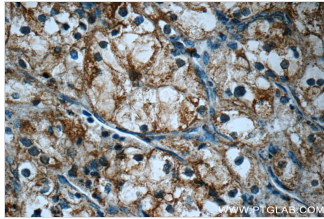
HeLa cells were subjected to SDS PAGE followed by western blot with 24803-1-AP(FAM92A1 Antibody) at dilution of 1:600



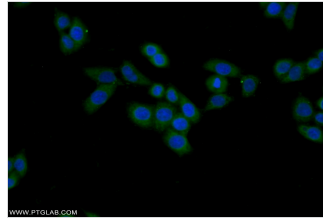
IP Result of anti-FAM92A1 (IP:24803-1-AP, 4ug; Detection:24803-1-AP 1:500) with HeLa cells lysate 4000ug.



Immunohistochemistry of paraffin-embedded human renal cell carcinoma tissue slide using 24803-1-AP(FAM92A1 Antibody) at dilution of 1:50 (under 10x lens)



Immunohistochemistry of paraffin-embedded human renal cell carcinoma tissue slide using 24803-1-AP(FAM92A1 Antibody) at dilution of 1:50 (under 40x lens)



Immunofluorescent analysis of HeLa cells using 24803-1-AP(FAM92A1 Antibody) at dilution of 1:50 and Alexa Fluor 488-conjugated AffiniPure Goat Anti-Rabbit IgG(H+L)