

RILP Polyclonal Antibody

Catalog number: 13574-1-AP

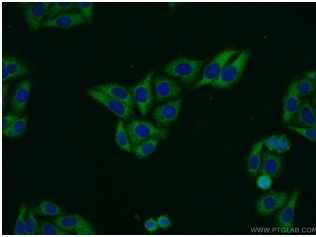
Size: 87 µg/150 µl

Source: Rabbit

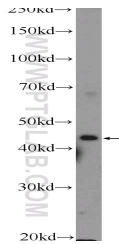
Isotype: IgG

Synonyms:

RILP; FLJ31193, PP10141, RILP



Immunofluorescent analysis of HepG2 cells using 13574-1-AP (RILP Antibody) at dilution of 1:50 and Alexa Fluor 488-conjugated AffiniPure Goat Anti-Rabbit IgG(H+L)



HEK-293 cells were subjected to SDS PAGE followed by western blot with 13574-1-AP (RILP Antibody) at dilution of 1:300

Applications

Tested applications:	ELISA, WB, IF
Species specificity:	Human; other species not tested.
Calculated RILP MW:	401aa, 41 kDa
Observed RILP MW:	41-45 kDa
Positive WB detected in:	HEK-293 cells, HepG2 cells
Positive IF detected in:	HepG2 cells
Recommended dilution:	WB: 1:200-1:1000 IF: 1:20-1:200

Application key: WB = Western blotting, IHC = Immunohistochemistry, IF = Immunofluorescence, IP = Immunoprecipitation

Immunogen information

Immunogen:	Ag4472
GenBank accession number:	BC031621
Gene ID (NCBI):	83547
Full name:	Rab interacting lysosomal protein

Product information

Purification method:	Antigen affinity purification
Storage:	PBS with 0.1% sodium azide and 50% glycerol pH 7.3. Store at -20°C.