

PPIG Polyclonal Antibody

Catalog number: 12985-1-AP

Size: 20 µg/150 µl

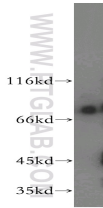
Source: Rabbit

Isotype: IgG

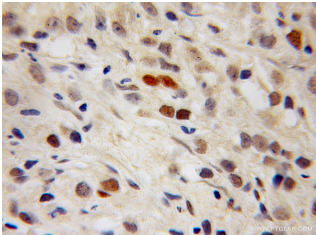
Synonyms:

PPIG; CARS-Cyp; CYP;

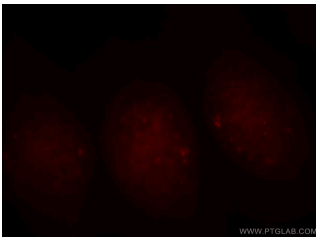
MGC133241; SRCyp



human liver tissue were subjected to SDS PAGE followed by western blot with 12985-1-AP(PPIG Antibody) at dilution of 1:800



Immunohistochemistry of paraffin-embedded human prostate cancer using 12985-1-AP(PPIG Antibody) at Dilution 1:100 (under 10x lens)



Immunofluorescent analysis of HeLa cells, using PPIG antibody 12985-1-AP at 1:25 dilution and Rhodamine-labeled goat anti-rabbit IgG (red).

Applications

Tested applications:	ELISA, WB, IHC, IF
Species specificity:	Human, mouse, rat; other species not tested.
Positive WB detected in:	Human liver tissue, Jurkat cells, NIH/3T3 cells, SH-SY5Y cells
Calculated PPIG MW:	739aa,87kd
Observed PPIG MW:	89kd
Positive IHC detected in:	Human prostate cancer
Positive IF detected in:	Hela cells
Recommended dilution:	WB: 1:200-1:2000 IHC: 1:50-1:200 IF: 1:20-1:50

Application key: WB = Western blotting, IHC = Immunohistochemistry, IF = Immunofluorescence, IP = Immunoprecipitation, FC = Flow cytometry

Immunogen information

Immunogen:	Ag3622
GenBank accession number:	BC001555
Gene ID (NCBI):	9360
Full name:	Peptidylprolyl isomerase G (cyclophilin G)

Product information

Purification method:	Antigen affinity purification
Storage:	PBS with 0.02% sodium azide and 50% glycerol pH 7.3. Store at -20°C.