

LARP1 Polyclonal Antibody

Catalog number: 13708-1-AP

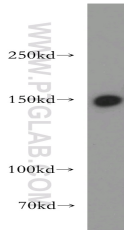
Size: 77 µg/150 µl

Source: Rabbit

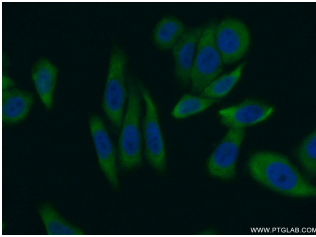
Isotype: IgG

Synonyms:

LARP1; KIAA0731, La related protein 1, LARP, LARP1



HeLa cells were subjected to SDS PAGE followed by western blot with 13708-1-AP (LARP1 antibody) at dilution of 1:500



Immunofluorescent analysis of (10% Formaldehyde) fixed HepG2 cells using 13708-1-AP (LARP1 Antibody) at dilution of 1:50 and Alexa Fluor 488-conjugated AffiniPure Goat Anti-Rabbit IgG(H+L)

Applications

Tested applications:	ELISA, WB, IF
Species specificity:	Human, Mouse, Rat; other species not tested.
Calculated LARP1 MW:	1096aa, 124 kDa
Observed LARP1 MW:	140-150 kDa
Positive WB detected in	HeLa cells, HepG2 cells, mouse brain tissue, mouse heart tissue, mouse testis tissue
Positive IF detected in	HepG2 cells
Recommended dilution:	WB: 1:500-1:5000 IF: 1:50-1:500

Application key: WB = Western blotting, IHC = Immunohistochemistry, IF = Immunofluorescence, IP = Immunoprecipitation

Immunogen information

Immunogen:	Ag4645
GenBank accession number:	BC033856
Gene ID (NCBI):	23367
Full name:	La ribonucleoprotein domain family, member 1

Product information

Purification method:	Antigen affinity purification
Storage:	PBS with 0.02% sodium azide and 50% glycerol pH 7.3. Store at -20°C.