

## MEIS2 Polyclonal Antibody

Catalog number: 11550-1-AP

Size: 20 µg/150 µl

Source: Rabbit

Isotype: IgG

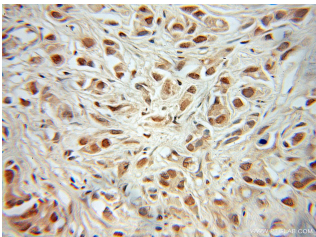
Synonyms:

MEIS2; Homeobox protein

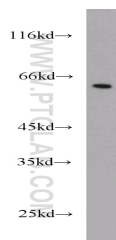
Meis2, HsT18361, Meis

homeobox 2, Meis1 related

protein 1, MEIS2, MRG1



Immunohistochemical of paraffin-embedded human prostate cancer using 11550-1-AP (MEIS2 antibody) at dilution of 1:50 (under 10x lens)



Jurkat cells were subjected to SDS PAGE followed by western blot with 11550-1-AP (MEIS2 antibody) at dilution of 1:500

### Background

MEIS2, also named as Meis1-related protein 1 or MRG1, is a 477 amino acid protein, which contains one homeobox DNA-binding domain and belongs to the TALE/MEIS homeobox family. MEIS2 is expressed in various tissues and at high level in the lymphoid organs of hematopoietic tissues. MEIS2 localizes in the nucleus and is involved in transcriptional regulation. MEIS2 is a critical downstream effector within an essential homeoprotein network that serving a rate-limiting regulatory role in MLL leukemogenesis. MEIS2 as midbrain specific marker is upregulated concomitantly with the morphological transformation of hindbrain to midbrain.

### Applications

Tested applications:	ELISA, IHC, WB
Cited applications:	IHC
Species specificity:	Human, Mouse, Rat; other species not tested.
Cited species:	Mouse
Calculated MEIS2 MW:	381aa, 42 kDa
Observed MEIS2 MW:	56kd
Positive WB detected in	Jurkat cells, PC-3 cells
Positive IHC detected in	Human prostate cancer tissue
Recommended dilution:	WB: 1:200-1:2000 IHC: 1:20-1:200

Application key: WB = Western blotting, IHC = Immunohistochemistry, IF = Immunofluorescence, IP = Immunoprecipitation

### Immunogen information

Immunogen:	Ag2096
GenBank accession number:	BC001516
Gene ID (NCBI):	4212
Full name:	Meis homeobox 2

### Product information

Purification method:	Antigen affinity purification
Storage:	PBS with 0.1% sodium azide and 50% glycerol pH 7.3. Store at -20°C.