

## RHCG Polyclonal Antibody

Catalog number: 11949-1-AP

Size: 48 µg/150 µl

Source: Rabbit

Isotype: IgG

Synonyms:

RHCG; Ammonium transporter

Rh type C, C15orf6, CDRC2,

PDR2, Rh family type C

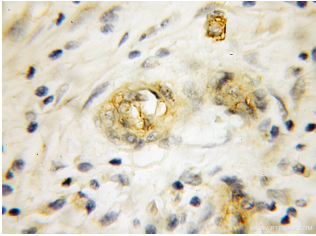
glycoprotein, Rh family, C

glycoprotein, Rh glycoprotein

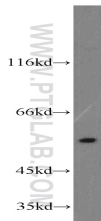
kidney, Rh type C glycoprotein,

RHCG, RHGK, SLC42A3, Tumor

related protein DRC2



Immunohistochemical of paraffin-embedded human pancreas cancer using 11949-1-AP (RHCG antibody) at dilution of 1:50 (under 10x lens)



HEK-293 cells were subjected to SDS PAGE followed by western blot with 11949-1-AP (RHCG antibody) at dilution of 1:300

### Applications

Tested applications:	ELISA, WB, IHC
Species specificity:	Human, Mouse, Rat; other species not tested.
Calculated RHCG MW:	479aa, 53 kDa
Observed RHCG MW:	52-55 kDa
Positive WB detected in:	HEK-293 cells, human kidney tissue
Positive IHC detected in:	Human pancreas cancer tissue, human kidney tissue
Recommended dilution:	WB: 1:200-1:2000 IHC: 1:20-1:200

Application key: WB = Western blotting, IHC = Immunohistochemistry, IF = Immunofluorescence, IP = Immunoprecipitation

### Immunogen information

Immunogen:	Ag2493
GenBank accession number:	BC030965
Gene ID (NCBI):	51458
Full name:	Rh family, C glycoprotein

### Product information

Purification method:	Antigen affinity purification
Storage:	PBS with 0.1% sodium azide and 50% glycerol pH 7.3. Store at -20°C.