

## CREG1 Polyclonal Antibody

Catalog number: 12220-1-AP

Size: 35 µg/150 µl

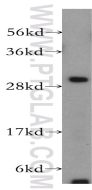
Source: Rabbit

Isotype: IgG

Synonyms:

CREG1; CREG, CREG1, Protein

CREG1



K-562 cells were subjected to SDS PAGE followed by western blot with 12220-1-AP(CREG1 antibody) at dilution of 1:400

### Background

REG1 (Cellular repressor of E1A-stimulated genes 1) shares limited sequence similarity with E1A and binds both the general transcription factor TBP and the tumor suppressor pRb in vitro(PMID:9710587). The monomers of CREG can associate into dimers and the dimerization is observed not only in the crystal but also in solution(PMID:16344469).The cellular repressor of E1A-stimulated genes (CREG) is a secreted glycoprotein that inhibits cell proliferation and/or enhances differentiation. CREG is widely expressed in adult tissues such as the brain, heart, lungs, liver, intestines and kidneys in mice(PMID:20857207).

### Applications

Tested applications:	ELISA, WB
Species specificity:	Human,Mouse,Rat; other species not tested.
Calculated CREG1 MW:	220aa,24 kDa
Observed CREG1 MW:	32 kDa
Positive WB detected in	K-562 cells
Recommended dilution:	WB: 1:200-1:2000

Application key: WB = Western blotting, IHC = Immunohistochemistry, IF = Immunofluorescence, IP = Immunoprecipitation

### Immunogen information

Immunogen:	Ag2901
GenBank accession number:	BC008628
Gene ID (NCBI):	8804
Full name:	Cellular repressor of E1A-stimulated genes 1

### Product information

Purification method:	Antigen affinity purification
Storage:	PBS with 0.1% sodium azide and 50% glycerol pH 7.3. Store at -20°C.