

TRUB1 Polyclonal Antibody

Catalog number: 12520-1-AP

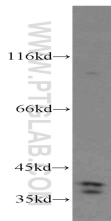
Size: 20 µg/150 µl

Source: Rabbit

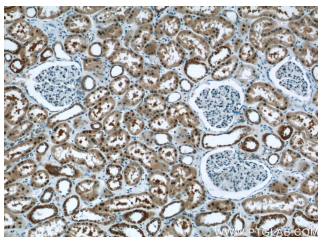
Isotype: IgG

Synonyms:

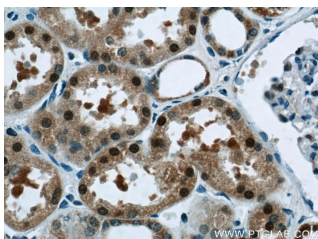
TRUB1; PUS4, TRUB1



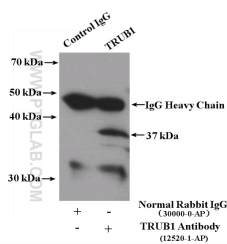
mouse liver tissue were subjected to SDS PAGE followed by western blot with 12520-1-AP (TRUB1 antibody) at dilution of 1:300



Immunohistochemistry of paraffin-embedded human kidney tissue slide using 12520-1-AP (TRUB1 Antibody) at dilution of 1:50 (under 10x lens)



Immunohistochemistry of paraffin-embedded human kidney tissue slide using 12520-1-AP (TRUB1 Antibody) at dilution of 1:50 (under 40x lens)



IP Result of anti-TRUB1

(IP:12520-1-AP, 4µg;

Detection:12520-1-AP 1:300)

with mouse liver tissue lysate

Background

TRUB1 gene encodes a 349-amino acid product, with a VFAVHKPKGPTSA box in positions 71-83 corresponding to motif I of the TruB family (probably involved in conserving protein structure). This protein may be responsible for synthesis of pseudouridine from uracil in transfer RNAs.

Applications

Tested applications:	ELISA, WB, IHC, IP
Species specificity:	Human, Mouse; other species not tested.
Calculated TRUB1 MW:	349aa, 37 kDa
Observed TRUB1 MW:	37 kDa
Positive WB detected in:	Mouse liver tissue
Positive IP detected in:	Mouse liver tissue
Positive IHC detected in:	Human kidney tissue
Recommended dilution:	WB: 1:200-1:1000
	IP: 1:200-1:1000
	IHC: 1:20-1:200

Application key: WB = Western blotting, IHC = Immunohistochemistry, IF = Immunofluorescence, IP = Immunoprecipitation

Immunogen information

Immunogen:	Ag3213
GenBank accession number:	BC030601
Gene ID (NCBI):	142940
Full name:	TruB pseudouridine (psi) synthase homolog 1 (E. coli)

Product information

Purification method:	Antigen affinity purification
Storage:	PBS with 0.02% sodium azide and 50% glycerol pH 7.3. Store at -20°C.

6400ug.