

RFC5 Polyclonal Antibody

Catalog number: 10385-1-AP

Size: 37 µg/150 µl

Source: Rabbit

Isotype: IgG

Synonyms:

RFC5; A1 36 kDa subunit,

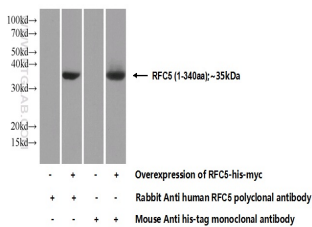
Activator 1 36 kDa subunit,

Activator 1 subunit 5,

Replication factor C subunit 5,

RF C 36 kDa subunit, RFC36,

RFC5



Transfected HEK-293 cells were subjected to SDS PAGE followed by western blot with 10385-1-AP (RFC5 Antibody) at dilution of 1:1000

Background

The elongation of primed DNA templates by DNA polymerase delta and DNA polymerase epsilon requires the accessory proteins proliferating cell nuclear antigen (PCNA) and replication factor C (RFC). RFC, also named activator 1, is a protein complex consisting of five distinct subunits of 140, 40, 38, 37, and 36 kD. Replication factor C5 (RFC5, synonyms: RFC36, MGC1155) is the 36 kD subunit. This subunit can interact with the C-terminal region of PCNA and form a core complex with the 38 and 40 kDa subunits. The core complex possesses DNA-dependent ATPase activity, which was found to be stimulated by PCNA in an in vitro system.

Applications

Tested applications:	ELISA, WB
Species specificity:	Human, Mouse, Rat; other species not tested.
Calculated RFC5 MW:	36.5 kDa
Observed RFC5 MW:	
Positive WB detected in	Transfected HEK-293 cells
Recommended dilution:	WB: 1:500-1:5000

Application key: WB = Western blotting, IHC = Immunohistochemistry, IF = Immunofluorescence, IP = Immunoprecipitation

Immunogen information

Immunogen:	Ag0584
GenBank accession number:	BC001866
Gene ID (NCBI):	5985
Full name:	Replication factor C (activator 1) 5, 36.5kDa

Product information

Purification method:	Antigen affinity purification
Storage:	PBS with 0.1% sodium azide and 50% glycerol pH 7.3. Store at -20°C.