

GRAP2 Polyclonal Antibody

Catalog number: 11894-1-AP

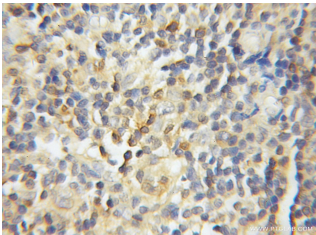
Size: 20 µg/150 µl

Source: Rabbit

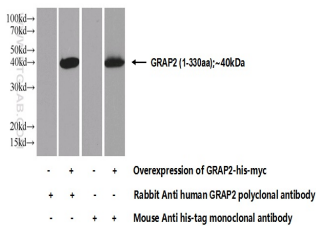
Isotype: IgG

Synonyms:

GRAP2; Adapter protein GRID, GADS, GRAP 2, GRAP2, GRB 2 like protein, GRB2 related adapter protein 2, GRB2 related adaptor protein 2, GRB2L, GRBLG, GrbX, Grf 40, Grf40, Grf40 adapter protein, GRID, GRPL, Mona, Protein GADS, SH3 SH2 SH3 adapter Mona



Immunohistochemical of paraffin-embedded human lymphoma using 11894-1-AP (GRAP2 antibody) at dilution of 1:50 (under 10x lens)



Transfected HEK-293 cells were subjected to SDS PAGE followed by western blot with 11894-1-AP (GRAP2 Antibody) at dilution of 1:1000

Background

GRAP2 is a member of the GRB2/Sem5/Drk family. This member is an adaptor-like protein involved in leukocyte-specific protein-tyrosine kinase signaling. Like its related family member, GRB2-related adaptor protein (GRAP), this protein contains an SH2 domain flanked by two SH3 domains. This protein interacts with other proteins, such as GRB2-associated binding protein 1 (GAB1) and the SLP-76 leukocyte protein (LCP2), through its SH3 domains. (refer to Wikipedia)

Applications

Tested applications:	ELISA, IHC, WB
Species specificity:	Human, Mouse, Rat; other species not tested.
Calculated GRAP2 MW:	330aa, 38 kDa
Observed GRAP2 MW:	
Positive WB detected in	Transfected HEK-293 cells
Positive IHC detected in	Human lymphoma tissue
Recommended dilution:	WB: 1:500-1:5000 IHC: 1:20-1:200

Application key: WB = Western blotting, IHC = Immunohistochemistry, IF = Immunofluorescence, IP = Immunoprecipitation

Immunogen information

Immunogen:	Ag2510
GenBank accession number:	BC026002
Gene ID (NCBI):	9402
Full name:	GRB2-related adaptor protein 2

Product information

Purification method:	Antigen affinity purification
Storage:	PBS with 0.1% sodium azide and 50% glycerol pH 7.3. Store at -20°C.