

TESC Polyclonal Antibody

Catalog number: 11125-1-AP

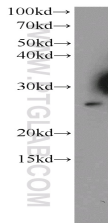
Size: 22 µg/150 µl

Source: Rabbit

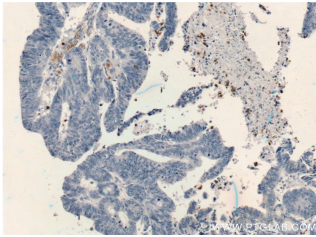
Isotype: IgG

Synonyms:

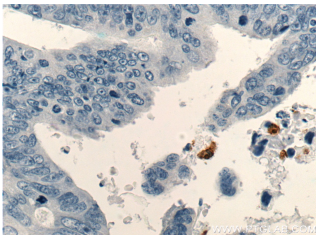
TESC; CHP3, FLJ20607, TESC,
tescalcin, TSC



HeLa cells were subjected to SDS PAGE followed by western blot with 11125-1-AP(TESC antibody) at dilution of 1:300



Immunohistochemistry of paraffin-embedded human colon cancer tissue slide using 11125-1-AP(TESC Antibody) at dilution of 1:200 (under 10x lens).



Immunohistochemistry of paraffin-embedded human colon cancer tissue slide using 11125-1-AP(TESC Antibody) at dilution of 1:200 (under 40x lens).

Applications

Tested applications:	ELISA, WB, IHC
Cited applications:	IHC, WB
Species specificity:	Human, Mouse, Rat; other species not tested.
Cited species:	Human, mouse
Calculated TESC MW:	25 kDa
Observed TESC MW:	25 kDa
Positive WB detected in	HeLa cells, mouse brain tissue
Positive IHC detected in	Human colon cancer tissue, human pancreas cancer tissue
Recommended dilution:	WB: 1:200-1:2000 IHC: 1:50-1:500

Application key: WB = Western blotting, IHC = Immunohistochemistry, IF = Immunofluorescence, IP = Immunoprecipitation

Immunogen information

Immunogen:	Ag1596
GenBank accession number:	BC015221
Gene ID (NCBI):	54997
Full name:	Tescalcin

Product information

Purification method:	Antigen affinity purification
Storage:	PBS with 0.1% sodium azide and 50% glycerol pH 7.3. Store at -20°C.