

CIDEA Polyclonal Antibody

Catalog number: 13170-1-AP

Size: 20 µg/150 µl

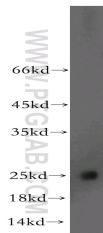
Source: Rabbit

Isotype: IgG

Synonyms:

CIDEA; Cell death activator

CIDE A, CIDE A, CIDEA



mouse heart tissue were subjected to SDS PAGE followed by western blot with 13170-1-AP(CIDEA antibody) at dilution of 1:100

Background

Cell death-inducing DNA fragmentation factor (DFFA)-like effector (CIDE) family proteins, including Cidea, Cideb, and Fsp27 (Cidec), are lipid droplet (LD)-associated proteins playing important roles in LD fusion, lipid secretion, and very-low-density-lipoprotein (VLDL) maturation. Cidea is highly enriched in adult brown adipose tissue (BAT), and its deficiency results in the accumulation of smaller LDs in brown adipocytes, improved insulin sensitivity, and resistance to diet-induced obesity. The MW of this protein is 25 kDa, and this antibody specially recognises the 25 kDa protein.

Applications

Tested applications:	ELISA, WB
Species specificity:	Human,Mouse,Rat; other species not tested.
Calculated CIDEA MW:	253aa,28 kDa
Observed CIDEA MW:	25kd
Positive WB detected in	Mouse heart tissue, mouse brain tissue
Recommended dilution:	WB: 1:200-1:2000

Application key: WB = Western blotting, IHC = Immunohistochemistry, IF = Immunofluorescence, IP = Immunoprecipitation

Immunogen information

Immunogen:	Ag3824
GenBank accession number:	BC031896
Gene ID (NCBI):	1149
Full name:	Cell death-inducing DFFA-like effector a

Product information

Purification method:	Antigen affinity purification
Storage:	PBS with 0.02% sodium azide and 50% glycerol pH 7.3. Store at -20°C.