

GPR17 Polyclonal Antibody

Catalog number: 13416-1-AP

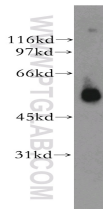
Size: 63 µg/150 µl

Source: Rabbit

Isotype: IgG

Synonyms:

GPR17; DKFZp686M18273



human serum tissue were subjected to SDS PAGE followed by western blot with 13416-1-AP(GPR17 Antibody) at dilution of 1:1000

Applications

Tested applications:	ELISA, WB
Species specificity:	Human, mouse, rat; other species not tested.
Positive WB detected in:	Human serum tissue
Calculated GPR17 MW:	367aa,41kd
Observed GPR17 MW:	50kd
Recommended dilution:	WB: 1:500-1:5000

Application key: WB = Western blotting, IHC = Immunohistochemistry, IF = Immunofluorescence, IP = Immunoprecipitation, FC = Flow cytometry

Immunogen information

Immunogen:	Ag4106
GenBank accession number:	BC031653
Gene ID (NCBI):	2840
Full name:	G protein-coupled receptor 17

Product information

Purification method:	Antigen affinity purification
Storage:	PBS with 0.02% sodium azide and 50% glycerol pH 7.3. Store at -20°C.