

PKC iota Polyclonal Antibody

Catalog number: 13883-1-AP

Size: 20 µg/150 µl

Source: Rabbit

Isotype: IgG

Synonyms:

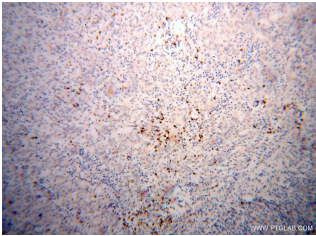
PRKCI; aPKC lambda/iota,

DXS1179E, PKC iota, PKCI,

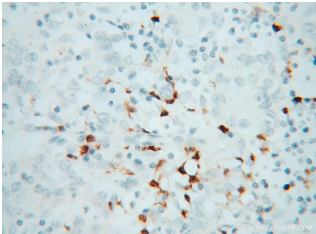
PRKC lambda/iota, PRKCI,

Protein kinase C iota type,

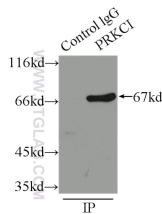
protein kinase C, iota



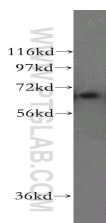
Immunohistochemical of paraffin-embedded human breast cancer using 13883-1-AP (PRKCI antibody) at dilution of 1:100 (under 10x lens)



Immunohistochemical of paraffin-embedded human breast cancer using 13883-1-AP (PRKCI antibody) at dilution of 1:100 (under 40x lens)



IP Result of anti-PRKCI (IP:13883-1-AP, 3µg; Detection:13883-1-AP 1:500) with HeLa cells lysate 2500µg.



HeLa cells were subjected to

Applications

Tested applications:	ELISA, IHC, WB, IP
Species specificity:	Human, Mouse, Rat; other species not tested.
Calculated PKC iota MW:	68 kDa
Observed PKC iota MW:	67 kDa
Positive WB detected in:	HeLa cells, MCF7 cells
Positive IP detected in:	HeLa cells
Positive IHC detected in:	Human breast cancer tissue
Recommended dilution:	WB: 1:200-1:2000
	IP: 1:200-1:2000
	IHC: 1:20-1:200

Application key: WB = Western blotting, IHC = Immunohistochemistry, IF = Immunofluorescence, IP = Immunoprecipitation

Immunogen information

Immunogen:	Ag4990
GenBank accession number:	BC022016
Gene ID (NCBI):	5584
Full name:	Protein kinase C, iota

Product information

Purification method:	Antigen affinity purification
Storage:	PBS with 0.02% sodium azide and 50% glycerol pH 7.3. Store at -20°C.

**SDS PAGE followed by
western blot with 13883-1-
AP(PRKCI antibody) at
dilution of 1:500**