

PSMA6 Polyclonal Antibody

Catalog number: 11573-1-AP

Size: 25 µg/150 µl

Source: Rabbit

Isotype: IgG

Synonyms:

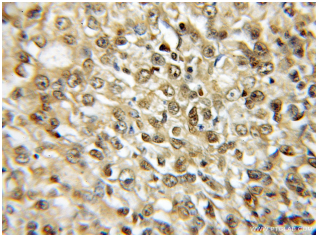
PSMA6; 20S proteasome, 27

kDa prosomal protein, IOTA,

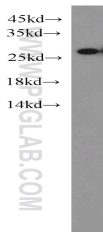
Macropain iota chain, p27K,

PROS 27, PROS27, Proteasome

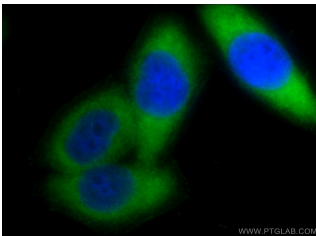
iota chain, PSMA6



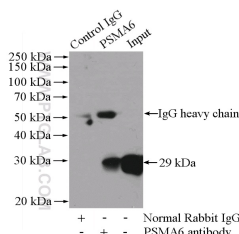
Immunohistochemical of paraffin-embedded human lung cancer using 11573-1-AP(PSMA6 antibody) at dilution of 1:50 (under 10x lens)



MCF7 cells were subjected to SDS PAGE followed by western blot with 11573-1-AP(PSMA6 antibody) at dilution of 1:1000



Immunofluorescent analysis of HeLa cells using 11573-1-AP(PSMA6 Antibody) at dilution of 1:50 and Alexa Fluor 488-conjugated AffiniPure Goat Anti-Rabbit IgG(H+L)



Background

PSMA6(Proteasome subunit alpha type-6) is also named as PROS27 and belongs to the peptidase T1A family. The proteasome is a multicatalytic proteinase complex which is characterized by its ability to cleave peptides with Arg, Phe, Tyr, Leu, and Glu adjacent to the leaving group at neutral or slightly basic pH. It also has an ATP-dependent proteolytic activity.

Applications

Tested applications:	ELISA, IHC, IF, WB, IP
Species specificity:	Human, Mouse, Rat; other species not tested.
Calculated PSMA6 MW:	246aa, 27 kDa
Observed PSMA6 MW:	27-29 kDa
Positive WB detected in	MCF7 cells, A375 cells, A549 cells, HEK-293 cells, HepG2 cells, human brain tissue, human skeletal muscle tissue, Jurkat cells, Neuro-2a cells
Positive IP detected in	HEK-293 cells
Positive IHC detected in	Human lung cancer tissue, human testis tissue
Positive IF detected in	HeLa cells, A375 cells, HepG2 cells, MCF-7 cells
Recommended dilution:	WB: 1:500-1:5000
	IP: 1:500-1:5000
	IHC: 1:20-1:200
	IF: 1:20-1:200

Application key: WB = Western blotting, IHC = Immunohistochemistry, IF = Immunofluorescence, IP = Immunoprecipitation

Immunogen information

Immunogen:	Ag2154
GenBank accession number:	BC023659
Gene ID (NCBI):	5687
Full name:	Proteasome (prosome, macropain) subunit, alpha type, 6

Product information

Purification method:	Antigen affinity purification
Storage:	PBS with 0.1% sodium azide and 50% glycerol pH 7.3. Store at -20°C.

**IP Result of anti-PSMA6
(IP:11573-1-AP, 4ug;
Detection:11573-1-AP 1:1000)
with HEK-293 cells lysate
3200ug.**