

Endoglin/CD105 Polyclonal Antibody

Catalog number: 10862-1-AP

Size: 37 µg/150 µl

Source: Rabbit

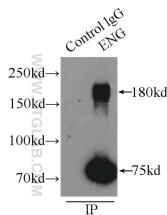
Isotype: IgG

Synonyms:

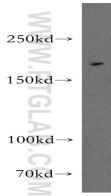
ENG; CD105, END, Endoglin,

ENG, FLJ41744, HHT1, ORW,

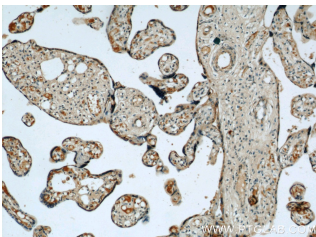
ORW1



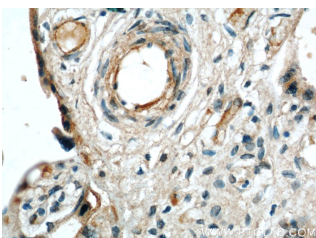
IP Result of anti-ENG (IP:10862-1-AP, 3ug; Detection:10862-1-AP 1:300) with mouse lung tissue lysate 4000ug.



mouse lung tissue were subjected to SDS PAGE followed by western blot with 10862-1-AP(ENG antibody) at dilution of 1:300



Immunohistochemical of paraffin-embedded human placenta using 10862-1-AP(ENG antibody) at dilution of 1:50 (under 10x lens)



Immunohistochemical of paraffin-embedded human placenta using 10862-1-

Background

Endoglin (ENG, CD105) is a homodimeric cell membrane glycoprotein of 180 kDa, composed of disulphide-linked subunits of 95 kDa. Endoglin is a proliferation-associated and hypoxia-inducible protein mainly expressed on vascular endothelial cells. It acts as an accessory receptor for transforming growth factor beta (TGF-β) and is involved in vascular development and remodelling. The important role of Endoglin in angiogenesis and in tumor progression makes it an ideal target for antiangiogenic therapy and a good marker for tumor prognosis. (PMID: 1326540; 14528280; 21737653; 12773481)

Applications

Tested applications:	ELISA, WB, IP, IHC
Cited applications:	IHC
Species specificity:	Human, Mouse, Rat; other species not tested.
Cited species:	Human
Calculated Endoglin/CD105 MW:	71 kDa
Observed Endoglin/CD105 MW:	170-180 kDa
Positive WB detected in	Mouse lung tissue
Positive IP detected in	Mouse lung tissue
Positive IHC detected in	Human placenta tissue
Recommended dilution:	WB: 1:200-1:1000
	IP: 1:200-1:1000
	IHC: 1:20-1:200

Application key: WB = Western blotting, IHC = Immunohistochemistry, IF = Immunofluorescence, IP = Immunoprecipitation

Immunogen information

Immunogen:	Ag1287
GenBank accession number:	BC014271
Gene ID (NCBI):	2022
Full name:	Endoglin

Product information

Purification method:	Antigen affinity purification
Storage:	PBS with 0.1% sodium azide and 50% glycerol pH 7.3. Store at -20°C.

**AP(ENG antibody) at dilution
of 1:50 (under 40x lens)**