

ASF/SF2 Polyclonal Antibody

Catalog number: 12929-2-AP

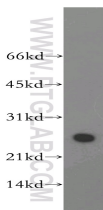
Size: 20 µg/150 µl

Source: Rabbit

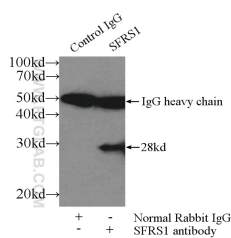
Isotype: IgG

Synonyms:

SFRS1; Alternative splicing factor 1, ASF, ASF 1, ASF/SF2, SF2, SF2p33, SFRS1, SRp30a, SRSF1



human brain tissue were subjected to SDS PAGE followed by western blot with 12929-2-AP(ASF/SF2 antibody) at dilution of 1:1000



IP Result of anti-ASF/SF2 (IP:12929-2-AP, 3µg; Detection:12929-2-AP 1:500) with mouse brain tissue lysate 3600µg.

Background

SFRS1, also named as ASF, SF2, SF2P33, SFRS1 and ASF-1, belongs to the splicing factor SR family. It plays a role in preventing exon skipping, ensuring the accuracy of splicing and regulating alternative splicing. SFRS1 interacts with other spliceosomal components, via the RS domains, to form a bridge between the 5'- and 3'-splice site binding components, U1 snRNP and U2AF. Isoform ASF-2 and isoform ASF-3 act as splicing repressors. This antibody can recognize all the 3 isoforms(28kd,33kd and 22kd) of SFRS1.

Applications

Tested applications:	ELISA, WB, IP
Cited applications:	WB
Species specificity:	Human,Mouse,Rat; other species not tested.
Cited species:	Human, rat
Calculated ASF/SF2 MW:	248aa,28 kDa
Observed ASF/SF2 MW:	28kd
Positive WB detected in	Human brain tissue, HeLa cells, human ileum tissue, human placenta tissue, mouse brain tissue
Positive IP detected in	Mouse brain tissue
Recommended dilution:	WB: 1:500-1:5000 IP: 1:200-1:2000

Application key: WB = Western blotting, IHC = Immunohistochemistry, IF = Immunofluorescence, IP = Immunoprecipitation

Immunogen information

Immunogen:	Ag3626
GenBank accession number:	BC101264
Gene ID (NCBI):	6426
Full name:	Splicing factor, arginine/serine-rich 1

Product information

Purification method:	Antigen affinity purification
Storage:	PBS with 0.1% sodium azide and 50% glycerol pH 7.3. Store at -20°C.