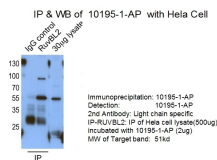
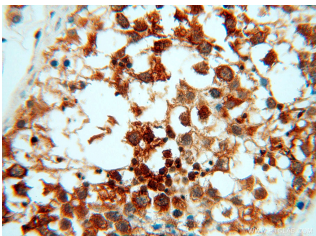


RUVBL2 Polyclonal Antibody

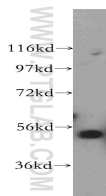
Catalog number: 10195-1-AP
Size: 31 µg/150 µl
Source: Rabbit
Isotype: IgG
Synonyms:
RUVBL2; 48 kDa TBP interacting protein, CGI 46, ECP 51, ECP51, INO80 complex subunit J, INO80J, Repressing pontin 52, REPTIN, Reptin 52, RuvB like 2, RuvB like 2 (E. coli), RUVBL2, RVB2, TAP54 beta, TIH2, TIP48, TIP49B



IP result of anti-RUVBL2(10195-1-AP for IP and Detection).



Immunohistochemical of paraffin-embedded human testis using 10195-1-AP(RUVBL2 antibody) at dilution of 1:50 (under 40x lens)



K-562 cells were subjected to SDS PAGE followed by western blot with 10195-1-AP(RUVBL2 antibody) at dilution of 1:800

Background

RuvB-like 2 (E. coli) (RUVBL2, synonyms: ECP51, TIP48, CGI-46, TIP49B) is the second human homologue of the bacterial RuvB gene. Bacterial RuvB protein is a DNA helicase essential for homologous recombination and DNA double-strand break repair. Functional analysis showed that RUVBL2 has both ATPase and DNA helicase activities.

Applications

Tested applications:	ELISA, WB, IHC, IP, IF
Cited applications:	Pull-down, WB
Species specificity:	Human, Mouse, Rat; other species not tested.
Cited species:	Human, mouse
Calculated RUVBL2 MW:	51 kDa
Observed RUVBL2 MW:	51kd
Positive WB detected in	K-562 cells, mouse testis tissue, rat testis tissue
Positive IP detected in	HeLa cells, mouse brain tissue
Positive IHC detected in	Human testis tissue, human brain tissue, human heart tissue, human kidney tissue, human lung tissue, human ovary tissue, human placenta tissue, human skin tissue, human spleen tissue
Positive IF detected in	HepG2 cells
Recommended dilution:	WB: 1:200-1:2000 IP: 1:200-1:2000 IHC: 1:20-1:200 IF: 1:20-1:200

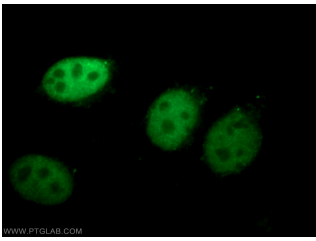
Application key: WB = Western blotting, IHC = Immunohistochemistry, IF = Immunofluorescence, IP = Immunoprecipitation

Immunogen information

Immunogen: Ag0253
GenBank accession number: BC000428
Gene ID (NCBI): 10856
Full name: RuvB-like 2 (E. coli)

Product information

Purification method: Antigen affinity purification
Storage: PBS with 0.1% sodium azide and 50% glycerol pH 7.3. Store at -20°C.



Immunofluorescent analysis of HepG2 cells using 10195-1-AP (RUVBL2 Antibody) at dilution of 1:50 and Alexa Fluor 488-conjugated AffiniPure Goat Anti-Rabbit IgG(H+L)