

Bcl-XL Polyclonal Antibody

Catalog number: 10783-1-AP

Size: 35 µg/150 µl

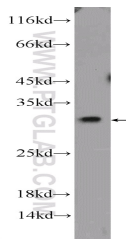
Source: Rabbit

Isotype: IgG

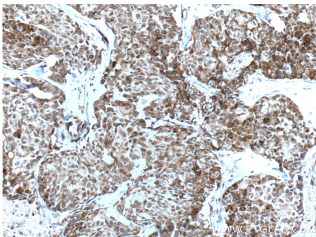
Synonyms:

BCL2L1; Apoptosis regulator

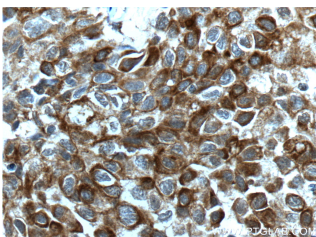
Bcl X, BCL2L1, Bcl-XL



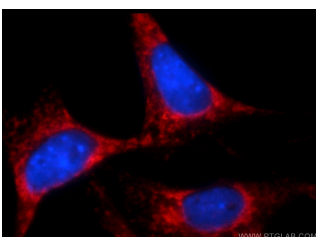
C6 cells were subjected to SDS PAGE followed by western blot with 10783-1-AP(Bcl-xL Antibody) at dilution of 1:1000



Immunohistochemistry of paraffin-embedded human lung cancer tissue slide using 10783-1-AP(Bcl-xL Antibody) at dilution of 1:200 (under 10x lens). heat mediated antigen retrieved with Tris-EDTA buffer(pH9).



Immunohistochemistry of paraffin-embedded human lung cancer tissue slide using 10783-1-AP(Bcl-xL Antibody) at dilution of 1:200 (under 40x lens). heat mediated antigen retrieved with Tris-EDTA buffer(pH9).



Background

BCL2L1 is a member of the BCL-2 protein family. BCL2L1 is expressed as two distinct isoforms, Bcl-xL and Bcl-xS, and is located at the outer mitochondrial membrane. The Bcl-XL isoform is a 233 amino acid protein, acting as an apoptotic inhibitor. Bcl-XL can form heterodimers with BAX, BAK or BCL2, and the heterodimerization with BAX does not seem to be required for anti-apoptotic activity. The Bcl-XS isoform is a shorter variant that is 178 amino acids in length and lacks a 63 amino acid region (amino acids 126-188), acting as an apoptotic activator. This antibody can recognize Bcl-XL, Bcl-XS and Bcl-X(Beta).

Applications

Tested applications:	ELISA, IP, IF, WB, IHC, FC
Cited applications:	IHC, WB
Species specificity:	Human, Mouse; other species not tested.
Cited species:	Human, mouse, rat
Calculated Bcl-XL MW:	26 kDa
Observed Bcl-XL MW:	30-35 kDa
Positive WB detected in	C6 cells, A549 cells, human placenta tissue, Jurkat cells, K-562 cells, mouse placenta tissue, NIH/3T3 cells, Raji cells, RAW264.7 cells
Positive IP detected in	K-562 cells
Positive IHC detected in	Human lung cancer tissue, human colon cancer tissue
Positive IF detected in	NIH/3T3 cells
Positive FC detected in	Jurkat cells
Recommended dilution:	WB: 1:500-1:5000 IP: 1:200-1:2000 IHC: 1:50-1:500 IF: 1:10-1:100 FC: N/A

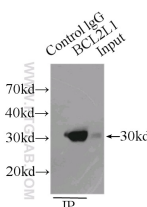
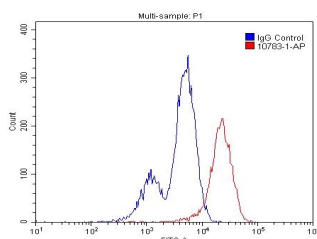
Application key: WB = Western blotting, IHC = Immunohistochemistry, IF = Immunofluorescence, IP = Immunoprecipitation

Immunogen information

Immunogen:	Ag1232
GenBank accession number:	BC019307
Gene ID (NCBI):	598
Full name:	BCL2-like 1

Product information

Purification method:	Antigen affinity purification
Storage:	PBS with 0.1% sodium azide and 50% glycerol pH 7.3. Store at -20°C.



Immunofluorescent analysis of NIH/3T3 cells using 10783-1-AP (Bcl-xL Antibody) at dilution of 1:25 and Rhodamine-Goat anti-Rabbit IgG

1X10⁶ Jurkat cells were stained with 0.2ug Bcl-xL antibody (10783-1-AP, red) and control antibody (blue). Fixed with 4% PFA blocked with 3% BSA (30 min). Alexa Fluor 488-conjugated AffiniPure Goat Anti-Rabbit IgG(H+L) with dilution 1:1500.

IP Result of anti-Bcl-xL (IP:10783-1-AP, 3ug; Detection:10783-1-AP 1:500) with K-562 cells lysate 8000ug.