

## MCM6 Polyclonal Antibody

Catalog number: 13347-2-AP

Size: 20 µg/150 µl

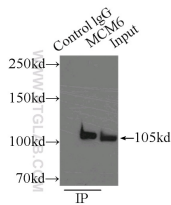
Source: Rabbit

Isotype: IgG

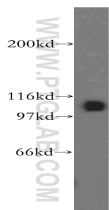
Synonyms:

MCM6; MCG40308, MCM6,

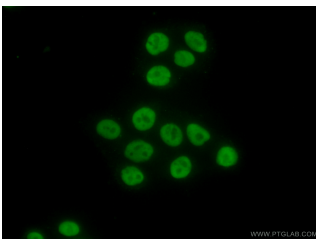
Mis5, P105MCM



IP Result of anti-MCM6 (IP:13347-2-AP, 3µg; Detection:13347-2-AP 1:1000) with HeLa cells lysate 3800µg.



mouse testis tissue were subjected to SDS PAGE followed by western blot with 13347-2-AP(MCM6 antibody) at dilution of 1:500



Immunofluorescent analysis of ( 10% Formaldehyde ) fixed HeLa cells using 13347-2-AP( MCM6 Antibody) at dilution of 1:50 and Alexa Fluor 488-conjugated AffiniPure Goat Anti-Rabbit IgG(H+L)

### Background

The MCM genes were firstly identified in yeast defective in minichromosome maintenance and have since been shown to have roles in the progression of the cell cycle, and most of them are cell division control genes[PMID: 18096807]. MCM2-7 complex are suggested to be 'DNA licensing factors' which bind to the DNA after mitosis and enable DNA replication before being removed during S phase. Minichromosome maintenance 6 (MCM6) is one component of the MCM2-7 complex which is the putative replicative helicase essential for 'once per cell cycle' DNA replication initiation and elongation in eukaryotic cells[PMID: 9305914]. MCM6 single subunit forms homohexamer and contains an ATP-dependent and replication fork stimulated 3' to 5' DNA unwinding activity along with intrinsic DNA-dependent ATPase and ATP-binding activities [PMID:21336027].

### Applications

Tested applications:	ELISA, WB, IP, IHC, IF
Cited applications:	IHC, WB
Species specificity:	Human,Mouse,Rat; other species not tested.
Cited species:	Human
Calculated MCM6 MW:	821aa,93 kDa
Observed MCM6 MW:	105 kDa
Positive WB detected in	Mouse testis tissue, HeLa cells, Jurkat cells, mouse ovary tissue, mouse spleen tissue, mouse thymus tissue
Positive IP detected in	HeLa cells
Positive IHC detected in	Human cervical cancer tissue, human lung cancer tissue
Positive IF detected in	HeLa cells
Recommended dilution:	WB: 1:500-1:5000 IP: 1:500-1:5000 IHC: 1:20-1:200 IF: 1:50-1:500

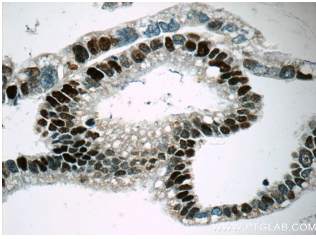
Application key: WB = Western blotting, IHC = Immunohistochemistry, IF = Immunofluorescence, IP = Immunoprecipitation

### Immunogen information

Immunogen:	Ag4180
GenBank accession number:	BC032374
Gene ID (NCBI):	4175
Full name:	Minichromosome maintenance complex component 6

### Product information

Purification method:	Antigen affinity purification
Storage:	PBS with 0.02% sodium azide and 50% glycerol pH 7.3. Store at -20°C.



**Immunohistochemistry of  
paraffin-embedded human  
cervical cancer tissue slide  
using 13347-2-AP ( MCM6  
Antibody) at dilution of 1:50  
(under 40x lens)**