

HNF1B Polyclonal Antibody

Catalog number: 12533-1-AP

Size: 42 µg/150 µl

Source: Rabbit

Isotype: IgG

Synonyms:

HNF1B; FJHN, HNF 1 beta, HNF

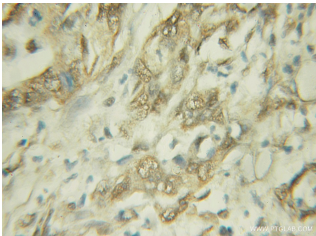
1B, HNF1 homeobox B, HNF1B,

HNF1beta, HNF2,

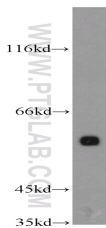
Homeoprotein LFB3, HPC11, LF

B3, LFB3, MODY5, TCF 2, TCF2,

Transcription factor 2, VHNF1



Immunohistochemical of paraffin-embedded human pancreas cancer using 12533-1-AP (HNF1B antibody) at dilution of 1:50 (under 10x lens)



L02 cells were subjected to SDS PAGE followed by western blot with 12533-1-AP (HNF1B antibody) at dilution of 1:800

Background

Hepatocyte nuclear factor-1-beta (HNF1B), or transcription factor-2 (TCF2), is a member of the homeodomain-containing superfamily of transcription factors. Early expression of HNF1B (12533-1-AP) is seen in the kidney, liver, pancreas, thymus, lung, gut and genital tract. HNF1B can be a homodimer or a heterodimer with HNF1A. It's a transcription factor, probably by binding to the inverted palindrome 5'-GTTAATNATTAAC-3', and as a bookmarking factor that marks target genes for rapid transcriptional reactivation after mitosis. This is a rabbit polyclonal antibody raised against part chain of N-terminus of human HNF1B

Applications

Tested applications:	ELISA, WB, IHC
Cited applications:	IHC
Species specificity:	Human, Mouse, Rat; other species not tested.
Cited species:	Human
Calculated HNF1B MW:	557aa, 61 kDa
Observed HNF1B MW:	58-60kd
Positive WB detected in	L02 cells, Jurkat cells
Positive IHC detected in	Human pancreas cancer tissue, human liver cancer tissue
Recommended dilution:	WB: 1:200-1:2000 IHC: 1:20-1:200

Application key: WB = Western blotting, IHC = Immunohistochemistry, IF = Immunofluorescence, IP = Immunoprecipitation

Immunogen information

Immunogen:	Ag3232
GenBank accession number:	BC017714
Gene ID (NCBI):	6928
Full name:	HNF1 homeobox B

Product information

Purification method:	Antigen affinity purification
Storage:	PBS with 0.1% sodium azide and 50% glycerol pH 7.3. Store at -20°C.