

PEF1 Polyclonal Antibody

Catalog number: 10151-1-AP

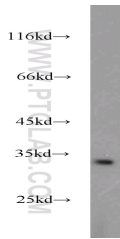
Size: 22 µg/150 µl

Source: Rabbit

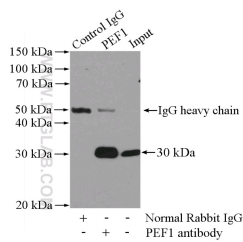
Isotype: IgG

Synonyms:

PEF1; ABP32, PEF1, PEF1A,
PEFLIN



HEK-293 cells were subjected to SDS PAGE followed by western blot with 10151-1-AP(PEF1 antibody) at dilution of 1:1000



IP Result of anti-PEF1 (IP:10151-1-AP, 4ug; Detection:10151-1-AP 1:500) with HEK-293 cells lysate 3200ug.

Applications

Tested applications:	ELISA, WB, IP
Cited applications:	IF, WB
Species specificity:	Human, Mouse, Rat; other species not tested.
Cited species:	Human
Calculated PEF1 MW:	30 kDa
Observed PEF1 MW:	30-33 kDa
Positive WB detected in	HEK-293 cells
Positive IP detected in	HEK-293 cells
Recommended dilution:	WB: 1:500-1:5000 IP: 1:200-1:2000

Application key: WB = Western blotting, IHC = Immunohistochemistry, IF = Immunofluorescence, IP = Immunoprecipitation

Immunogen information

Immunogen:	Ag0198
GenBank accession number:	BC002773
Gene ID (NCBI):	553115
Full name:	Penta-EF-hand domain containing 1

Product information

Purification method:	Antigen affinity purification
Storage:	PBS with 0.1% sodium azide and 50% glycerol pH 7.3. Store at -20°C.