

CaMKII beta Polyclonal Antibody

Catalog number: 11533-1-AP

Size: 34 µg/150 µl

Source: Rabbit

Isotype: IgG

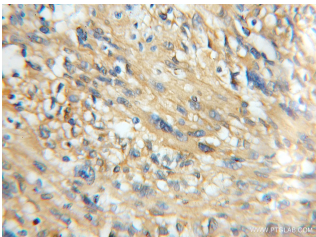
Synonyms:

CAMK2B; CaM kinase II subunit

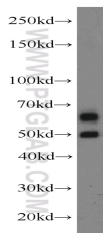
beta, CAM2, CaMK II subunit

beta, CAMK2, CAMK2B,

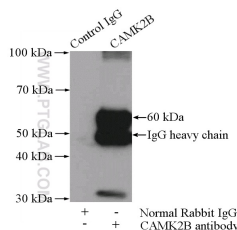
CAMKB, CaMKII beta



Immunohistochemical of paraffin-embedded human gliomas using 11533-1-AP (CAMK2B antibody) at dilution of 1:50 (under 10x lens)



mouse brain tissue were subjected to SDS PAGE followed by western blot with 11533-1-AP (CAMK2B antibody) at dilution of 1:1000



IP Result of anti-CAMK2B (IP:11533-1-AP, 4µg; Detection:11533-1-AP 1:1000) with mouse brain tissue lysate 4000µg.

Background

CAMK2B (Calcium/calmodulin-dependent protein kinase type II subunit beta), also named as CAM2, CAMK2 and CAMKB, belongs to the protein kinase superfamily, CAMK Ser/Thr protein kinase family and CaMK subfamily. It is a prominent kinase in the central nervous system that may function in long-term potentiation and neurotransmitter release. CAMK2B is a member of the NMDAR signaling complex in excitatory synapses, it may regulate NMDAR-dependent potentiation of the AMPAR and synaptic plasticity. It plays a distinct role in the induction of energy in T lymphocytes, by differential regulation of IL10 and IL2 gene transcription suggesting MEF2A as a molecular target which can integrate different calcium signals (PMID:22578382). This protein has 8 isoforms produced by alternative splicing with the molecular weight between 50 kDa and 73 kDa.

Applications

Tested applications:	ELISA, WB, IHC, IP
Cited applications:	WB
Species specificity:	Human, Mouse, Rat; other species not tested.
Cited species:	Mouse
Calculated CaMKII beta MW:	503aa, 56 kDa
Observed CaMKII beta MW:	50-70 kDa
Positive WB detected in	Mouse brain tissue, human brain tissue, SH-SY5Y cells
Positive IP detected in	Mouse brain tissue
Positive IHC detected in	Human gliomas tissue, human brain tissue
Recommended dilution:	WB: 1:500-1:5000 IP: 1:500-1:5000 IHC: 1:20-1:200

Application key: WB = Western blotting, IHC = Immunohistochemistry, IF = Immunofluorescence, IP = Immunoprecipitation

Immunogen information

Immunogen:	Ag2119
GenBank accession number:	BC019070
Gene ID (NCBI):	816
Full name:	Calcium/calmodulin-dependent protein kinase II beta

Product information

Purification method:	Antigen affinity purification
Storage:	PBS with 0.1% sodium azide and 50% glycerol pH 7.3. Store at -20°C.