

SHMT2 Polyclonal Antibody

Catalog number: 11099-1-AP

Size: 30 µg/150 µl

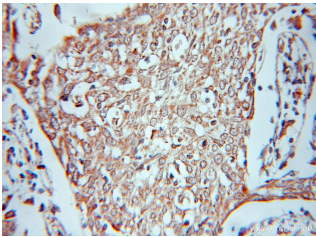
Source: Rabbit

Isotype: IgG

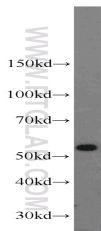
Synonyms:

SHMT2; GLYA, Serine

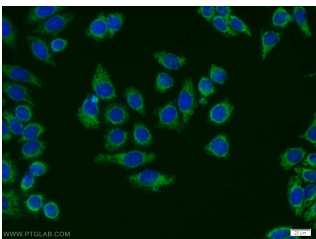
methylase, SHMT, SHMT2



Immunohistochemical of paraffin-embedded human cervical cancer using 11099-1-AP (SHMT2 antibody) at dilution of 1:50 (under 10x lens)



HeLa cells were subjected to SDS PAGE followed by western blot with 11099-1-AP (SHMT2 antibody) at dilution of 1:800



Immunofluorescent analysis of MCF-7 cells using 11099-1-AP (SHMT2 Antibody) at dilution of 1:50 and Alexa Fluor 488-conjugated AffiniPure Goat Anti-Rabbit IgG(H+L)

Applications

Tested applications:	ELISA, WB, IHC, IF
Species specificity:	Human, Mouse, Rat; other species not tested.
Calculated SHMT2 MW:	55 kDa
Observed SHMT2 MW:	55 kDa
Positive WB detected in	HeLa cells, HEK-293 cells, MCF7 cells, mouse kidney tissue
Positive IHC detected in	Human cervical cancer tissue, human heart tissue
Positive IF detected in	MCF-7 cells
Recommended dilution:	WB: 1:200-1:2000 IHC: 1:20-1:200 IF: 1:20-1:200

Application key: WB = Western blotting, IHC = Immunohistochemistry, IF = Immunofluorescence, IP = Immunoprecipitation

Immunogen information

Immunogen:	Ag1584
GenBank accession number:	BC011911
Gene ID (NCBI):	6472
Full name:	Serine hydroxymethyltransferase 2 (mitochondrial)

Product information

Purification method:	Antigen affinity purification
Storage:	PBS with 0.1% sodium azide and 50% glycerol pH 7.3. Store at -20°C.